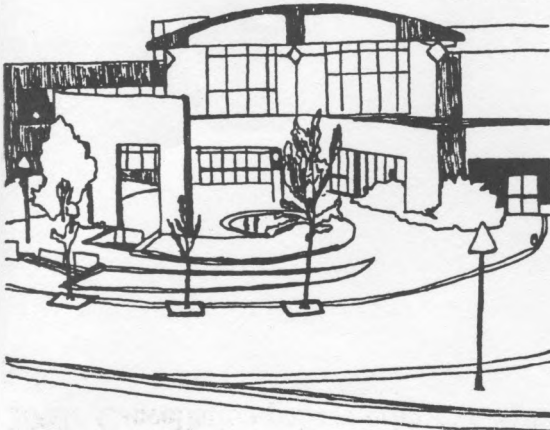


arvadacenter

for the arts
and humanities

6901 Wadsworth Boulevard



65th Annual Banquet

Saturday, October 25, 2003

Cash Bar – 6:00 PM

Dinner – 7:00 PM

Make your plans now to attend the 65th annual Rocky Mountain Railroad Club banquet. Our event will again be at the Arvada Center for the Arts and Humanities located at 6901 Wadsworth Boulevard, Arvada, Colorado.

The menu for this year's banquet will be: Shells Florentine, a delicious Ricotta cheese and spinach in jumbo pasta shells, served with a light garlic cream sauce and topped with a ribbon of marinara is our Vegetarian choice. Princess Chicken, a lightly breaded chicken with a stuffing of asparagus, topped with a white wine Béchamel sauce, is our poultry selection. Then for a seafood selection we have Swordfish Parmesan, Swordfish steak lightly breaded in fresh Parmesan cheese, served with a lemon beurre blanc sauce. This was very popular last year. These three entrees are \$35.00 each. Roast Prime Rib of Beef, aged to perfection, served with au jus and horseradish, will again be our beef selection. This choice is \$40.00. All dinners are accompanied by a tossed garden green salad with choice of two dressings, fresh seasonable vegetables, potatoes, assorted rolls, butter and dessert. The bar will stay open during dinner for those wanting that second glass of wine. We look forward to seeing you at this great event!

Mel Patrick, famous railroad photographer, will present this year's program, a multi-media slide show.

Many of the Front Range merchants have donated very nice door prizes again this year. We are having a good response to our request for donations, so we should have a nice selection and quantity of door prizes.

Please call the Club's voice mail at 303-979-2806 and leave a message to order tickets or if you have questions. Tickets may also be purchased by mailing your order to the Club's post office box (RMRRRC Banquet, PO Box 2391, Denver, CO, 80201-2391), or you may order later on the Club's website. All orders must be placed by October 18, 2003. Cancellation policy: prior to October 18, 2003, there will be a \$20.00 per ticket order service charge. No refunds after October 18, 2003.

-----cut here-----please type or print clearly-----cut here-----

Menu Choices:	Vegetarian Shells Florentine	How Many? _____	At \$35.00 Each = \$ _____
	Princess Chicken	How Many? _____	At \$35.00 Each = \$ _____
	Swordfish Parmesan	How Many? _____	At \$35.00 Each = \$ _____
	Roast Prime Rib of Beef	How Many? _____	At \$40.00 Each = \$ _____
Total Amount enclosed or charged to your Visa, MC, Discover or AmEx card			\$ _____

Name _____

Address _____ City _____ State _____ Zip (5+4) _____

Home Phone _____ Work Phone _____ E-mail _____

Credit Card number (Visa, MC, Discover, AmEx) _____ Exp Date _____

Signature for credit card orders _____