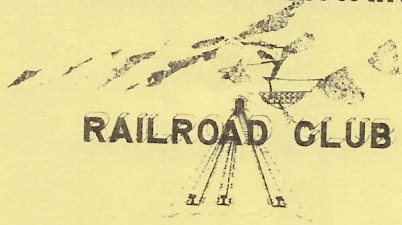


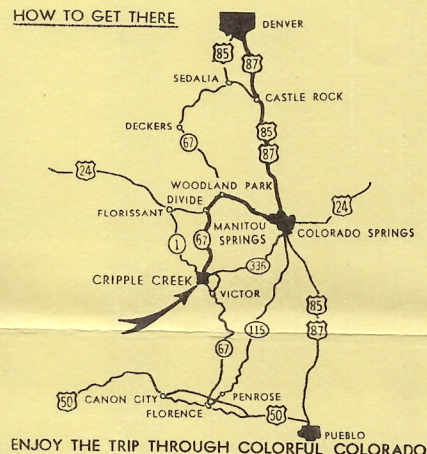
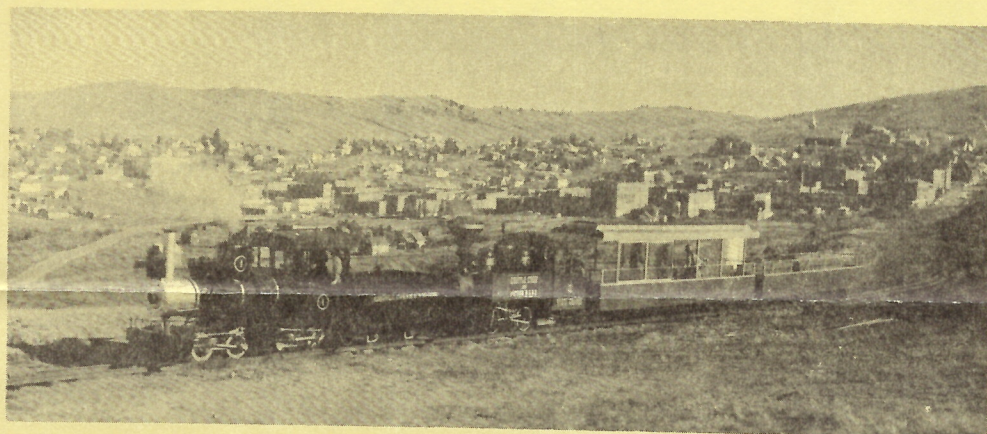
THE  
ROCKY MOUNTAIN

RAILROAD CLUB



....invites you to the  
CRIPPLE CREEK & VICTOR RAILROAD  
STEAM SPECTACULAR

Saturday & Sunday, June 12 and 13, 1976



The Rocky Mountain Railroad Club has made arrangements for a two-day steamup of all four steam locomotives on this unique two-mile, 2-foot gauge railroad. Visitors will be able to see and ride on the Pinosles 0-4-4-0, the only operating 2-ft. gauge mallet in the world; the Bagnal 0-4-0+0-4-0, a 26 ton, superheated, articulated; a Porter 0-4-0 and the Henschell 0-4-0. Very seldom are these mallet locos steamed up, the last time being five years ago. We will have our own special trains for photo stops and cab rides utilizing a variety of locomotive combinations.

The trains will operate approximately from 10:00 AM until about 3:00 PM each day over the former Midland Terminal Ry. grade between Cripple Creek and Anaconda. The cost of this unique and RARE opportunity is only \$5.00 per adult and \$2.50 for children. Your ticket will entitle you to unlimited rides both days, with a ride in the locomotive cab as well.

There are also many other fun and rewarding attractions in the Cripple Creek Mining District! The Molly Kathlene mine tour, the Imperial Players Melodrama, the Story of Cripple Creek, Mt. Pisgah Scenic Drive, and many restaurants and shops. The famous mining camp, located in the shadow of Pikes Peak, can be easily reached by paved road from Denver and Colorado Springs or from the Springs via the beautiful and historic Gold Camp Road built on the CS&CD roadbed that takes the driver over high fills and through old railroad tunnels, or from the south via the old railroad grade, bridges and tunnels of the F&CC in Phantom Canyon. Bring the family and make a day of it or stay the weekend. Accommodations in town include the Cripple Creek Motel and the Imperial Hotel. A trailer park is available for those with campers. Come join us in this great outing! Order your tickets now!

CRIPPLE CREEK STEAM SPECTACULAR

Enclosed is a check or money order in the amount of \$ \_\_\_\_\_ for \_\_\_\_\_ adult tickets (\$5.00 each) and \_\_\_\_\_ children's tickets (age 5-12, \$2.50 each).

Mail to:

Rocky Mountain Railroad Club  
P. O. Box 2391  
Denver, Colorado 80201

NAME \_\_\_\_\_

ADDRESS \_\_\_\_\_

ZIP \_\_\_\_\_