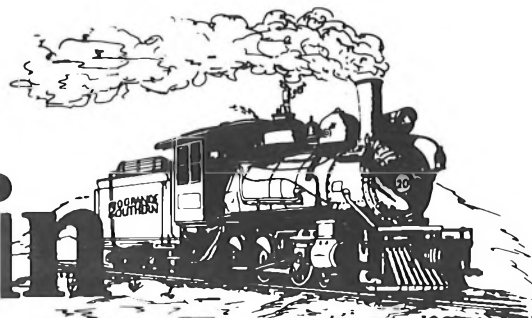


Rocky Mountain RAIL REPORT



THE ROCKY MOUNTAIN RAILROAD CLUB

MEETING SCHEDULE:

January 10, 1995 -- 7:30 p.m.

Southeast wing of Christ Episcopal Church, 2950 South University at Bates, Off-street parking at rear (east) of meeting hall. Please use the building's south entrance.

Jim Trowbridge..... Editor
Mike Johnson..... President
Roger Callender..... Vice President
Bill Gordon..... Secretary
Ardie Schoeninger..... Treasurer

Send all items for publication to: Rocky Mountain Rail Report, c/o Jim Trowbridge, Editor, 502 South Cody Street, Lakewood, Colorado 80226.

COPY DEADLINE ALL copy for publication in the February, 1995 Rail Report is due no later than January 10, 1995!!

January, 1995..... No. 424
Club Telephone..... (303) 431-4354
P. O. Box 2391..... Denver, Colorado 80201

CURRENT NEWS AND HISTORICAL NOTES OF ROCKY MOUNTAIN RAILROADING PUBLISHED MONTHLY FOR ITS MEMBERS BY THE ROCKY MOUNTAIN RAILROAD CLUB.

CLUB MEMBERSHIP

Membership in the Rocky Mountain Railroad Club may be obtained by sending \$24.00 (\$20.00 annual dues plus enrollment fee of \$4.00) to: ROCKY MOUNTAIN RAILROAD CLUB, P. O. Box 2391, Denver, Colorado 80201. An Associate Membership for Spouses and Children is also available for a yearly rate of \$10.00. On regular memberships, new members joining after April of each year may obtain membership for a payment of \$4.00 enrollment fee plus \$2.00 for each month remaining in the calendar year. Dues for the next year are solicited in December of the current year.

MEMBERSHIP INQUIRIES

Please refer address changes, new memberships, dues payments, lost newsletters, missing newsletter pages, and, any other membership related matters to:

Linda Johnson, Membership Chairperson
c/o Rocky Mountain Railroad Club
P. O. Box 2391
Denver, Colorado 80201



JANUARY 10 PROGRAM

"Trackside on the Union Pacific for the Past 25 Years" will be presented by noted railroad photographer and RMRRC member, Tom Klinger. Tom's slide presentation will cover UP action within a 250-mile radius of Denver over the past twenty-five years.

PRESERVATION FUND AND BOOK DRAWING

The prizes and winners at the December 13, 1994 meeting were as follows:

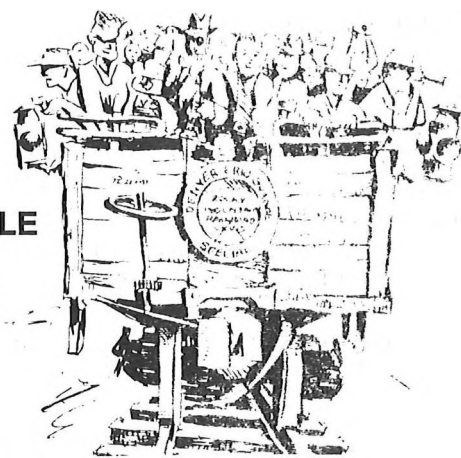
Ron Keiser / Rails 'N' Tales by Irv August
 Erma Morison / Rails 'N' Tales
 Rich Berens / Rails 'N' Tales
 G. W. Pool / Rails 'N' Tales
 Dick Ross / Rails 'N' Tales
 Tom Abbott / American Railroads
 Bill Perrin / The Allegheny--Lima's Finest
 Bill Thompson / Central Vermont Railway
 Ardie Schoeninger / The Southern Railway Handbook
 Ronnie Bill / Set of Misc. Postcards
 Bud Lehrer / Set of Misc. Employee Timetables
 Jim Hurt / 6 NRHS Bulletins
 Darrell Taylor / Tragedy at Eden
 Owen Whitwell / Goin' Railroading
 Entire Audience / 1995 Union Pacific Calendars (courtesy of Jim Ehernberger)

The support of the Preservation Fund book drawing was excellent in 1994 and we look forward to another banner year in 1995. The funds collected by this monthly drawing goes a long way in helping to preserve the Club's equipment and other worthy projects. Our thanks to all who have participated, and, especially to those who have donated material for the drawing.

If members have items they wish to donate for the monthly drawings, such as railroad books, pamphlets, timetables, maps, etc., they may contact either Dale Downing at Club meetings or Roger Callender at his home address, 2573 So. Williams Street, Denver, Colorado 80210, or, phone (303) 722-4733.



1995 SCHEDULE OF EVENTS



January 10	Regular Monthly Meeting
January 14*	Colorado & Western Tour Jim Trowbridge's HO3 Model Railroad Open House
February 5	Rio Grande Ski Train
February 14	Regular Monthly Meeting
March 14	Regular Monthly Meeting
April 11	Regular Monthly Meeting
May 9	Regular Monthly Meeting
May 13	Coors RR Tour/Colorado RR Museum
June 3 & 4*	Annual Workday/Colorado RR Museum & Museum Steamup
June 13	Regular Monthly Meeting
June 17	Uhrich Locomotive Works & Uhrich Railway, Strasburg, CO
July 11	Regular Monthly Meeting
July 15-16	Smithsonian Private Car Trip
August 8	Regular Monthly Meeting
August 12	Como/Fairplay Area--DSP&P Field Trip
September 12	Regular Monthly Meeting
September 29- October 8	Arizona/New Mexico Sojourn
October 14*	ANNUAL BANQUET
November 14	Regular Monthly Meeting
December 1-3	D&SNG RR Winter Trip
December 12	ELECTIONS and Regular Monthly Meeting

*Additions, deletions and corrections will be made in the Rail Report throughout the year. Be sure to look for details monthly!

ANNUAL DUES RENEWAL

Everyone received a dues notice along with the December newsletter. Your cooperation in returning your dues payment as soon as possible will be greatly appreciated. This will greatly aid both Linda Johnson, Membership Chairperson and Ardie Schoeninger, Treasurer. In addition, we will be able to get membership cards out early if a substantial number of dues get in early!!

You will note that we have requested your full 9-digit zip code. [You can easily obtain this number on any "junk mail" you may receive as it is required by the Postal Service to get their lowest mailing rates] You know that this zip code will be required in the future on all bulk mailings, regardless of postal class and we need to begin now to be prepared. Never-the-less, you will probably get your newsletter much quicker if the 9-digit code is on your mailing label. Your cooperation in this matter is greatly appreciated.

1995 DUES RENEWAL

NAME _____
Please Print or Type

ADDRESS _____
Zip _____
9-Digit

TELEPHONE () _____

NAME *(Spouse)* _____

NAME *(Child)* _____

NAME *(Child)* _____

1995 Primary Membership \$ 20.00
1995 Associate Membership*
 @ \$10.00 each[] _____
 Number
Total..... \$ _____

*Associate members receive their own membership card and assigned number that transfers to a regular membership should they desire it later. Only one newsletter is sent to each family unit.

ANNUAL BOOK RAFFLE

Prizes to be awarded this year are as follows: 1st Prize--*Memorial Edition: Denver, South Park & Pacific* (RMRRRC), M. J. Poor; 2nd Prize--*Georgetown and the Loop* (RMRRRC), Griswold, Kindig & Trombly; 3rd Prize--*RR Rail Book Ends*, Thick slices of collector's rail from the Lackawanna Iron & Coal Company 40# rail, dated "Scranton--9/1888." This rail was last used on the High Country Railroad, Heritage Square, Golden, Colorado.

Chances are \$2.00 each and you may enter as many times as you wish. Coupons are provided for your convenience. *Please be sure to fill out each coupon with your name and address!* Additional coupons may be created by members by photocopying the ones provided here.

The Annual Book Raffle, held at the April Regular Club Meeting, provides additional funds used toward the preservation of the Rocky Mountain Railroad Club's historical railroad equipment at the Colorado Railroad Museum.

Send your coupons to: ROCKY MOUNTAIN RAILROAD CLUB, Annual Book Raffle, P. O. Box 2391, Denver, Colorado 80201.

ROCKY MOUNTAIN RAILROAD CLUB
1995 Book Drawing - April 11, 1995

NAME _____

ADDRESS _____

Zip _____

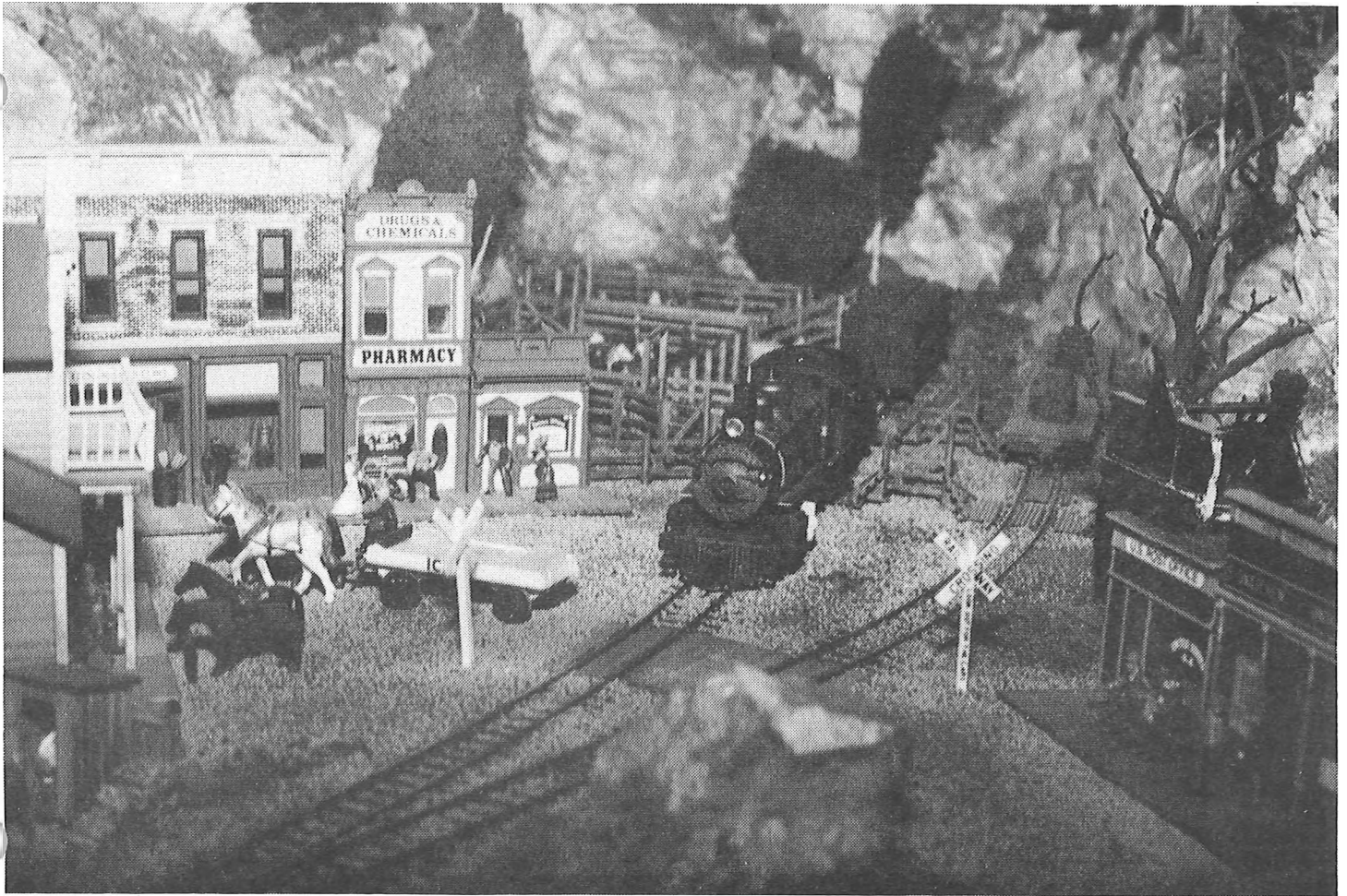
Please Print or Type. Winners need not be present.

ROCKY MOUNTAIN RAILROAD CLUB
1995 Book Drawing - April 11, 1995

NAME _____

ADDRESS _____

Please Print or Type. Winners need not be present.



Colorado & Western Railway's No. 450 is switching at the North Gunnison stock yards in this view of one of the many scenes on your editor's HO₃ model railroad. It's 1905 and the Colorado & Western serves customers along a north/south route that connects Gunnison on the south and Aspen on the north with interchange with the C&S and D&RG narrow gauge at Gunnison and the standard gauge Colorado Midland and D&RG at Aspen. (Jim Trowbridge Photograph)

COLORADO & WESTERN RAILWAY TOUR

OPEN HOUSE

Ye Olde Editor, Jim Trowbridge, cordially invites all Rocky Mountain Railroad Club members and their families to an Open House on the Colorado & Western Railway.

Date: Saturday, January 14, 1995.

Time: 1:00 to 5:00 p.m.

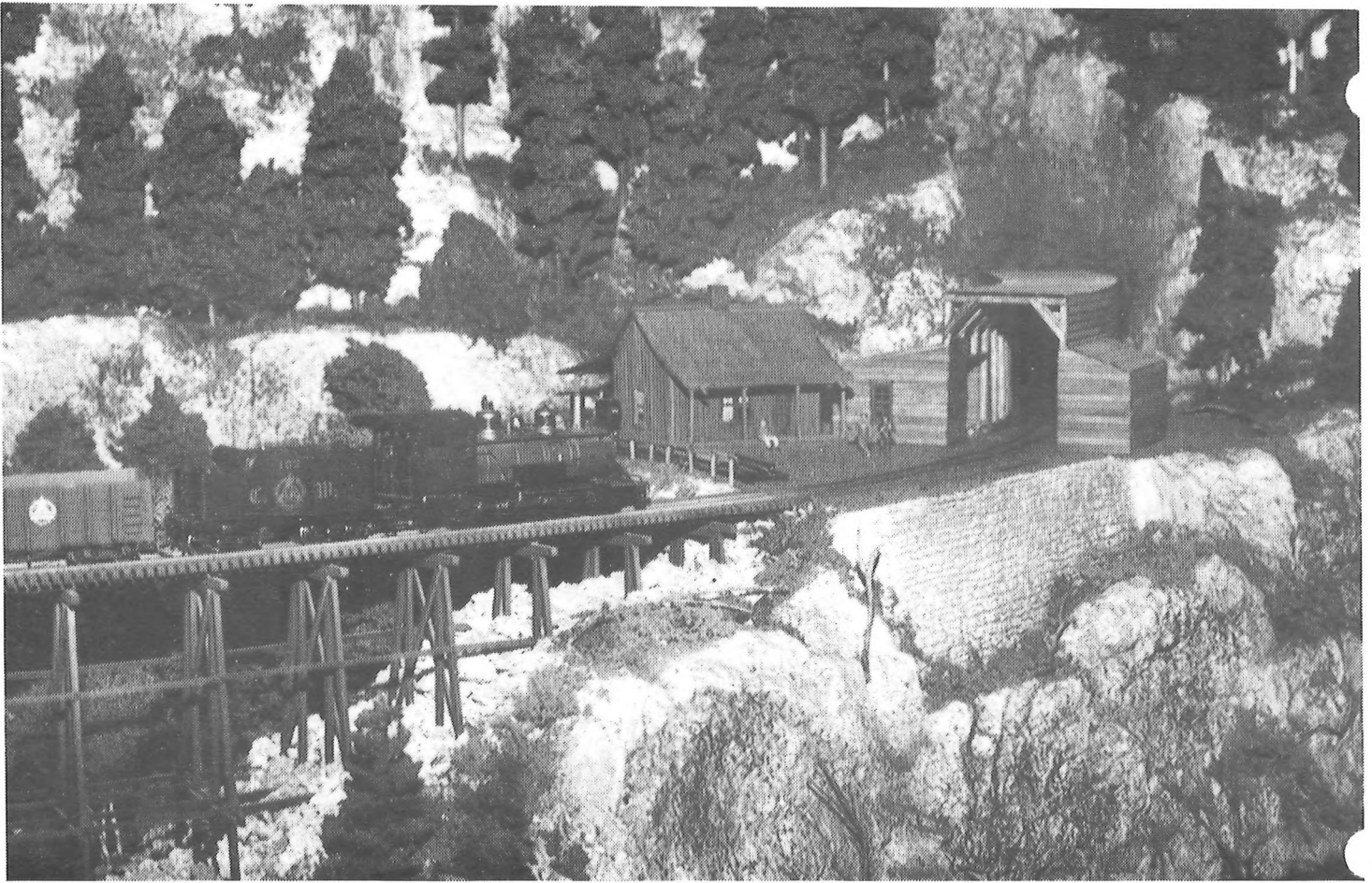
Place: Company headquarters, 502 South Cody Street, Lakewood, CO.

This outing is meant to be a FAMILY event and spouses and children are not only welcomed, but encouraged to take part in the Open House. [Please note this request: The Colorado & Western is a craftsman's level

model railroad, and, children should be with their parents and watched carefully to avoid any damage to the layout]

Besides offering a family outing during the winter months, this will be the last opportunity to see this layout before it is disassembled and sold off to make way for a new HO₃ layout. The Colorado & Western will be featured two months running in the February and March, 1995, issues of Model Railroading magazine.

The Colorado & Western Railway is an HO₃ (HO-scale, 3-foot narrow gauge) model railroad of club-size. The mainline is almost 500 feet and total trackage approaches 1000 feet. Scenery is about 90% complete and operation consists of walk-around cabs (four total). It occupies the entire basement.



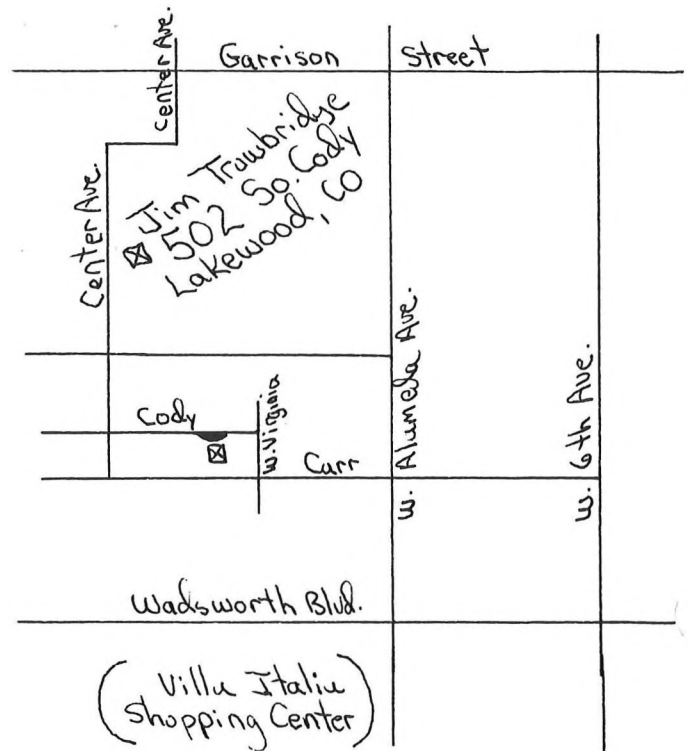
Colorado & Western No. 102, pulling a 6-car freight, is about to pause at the Aspen Mountain section house before proceeding into the snowshed approach to Rock Tunnel. The train has just crossed the Aspen Mountain Trestle. The empty coal cars are bound for Aspen Jct., where the Colorado Midland provides coal from off its Jerome Park Branch.

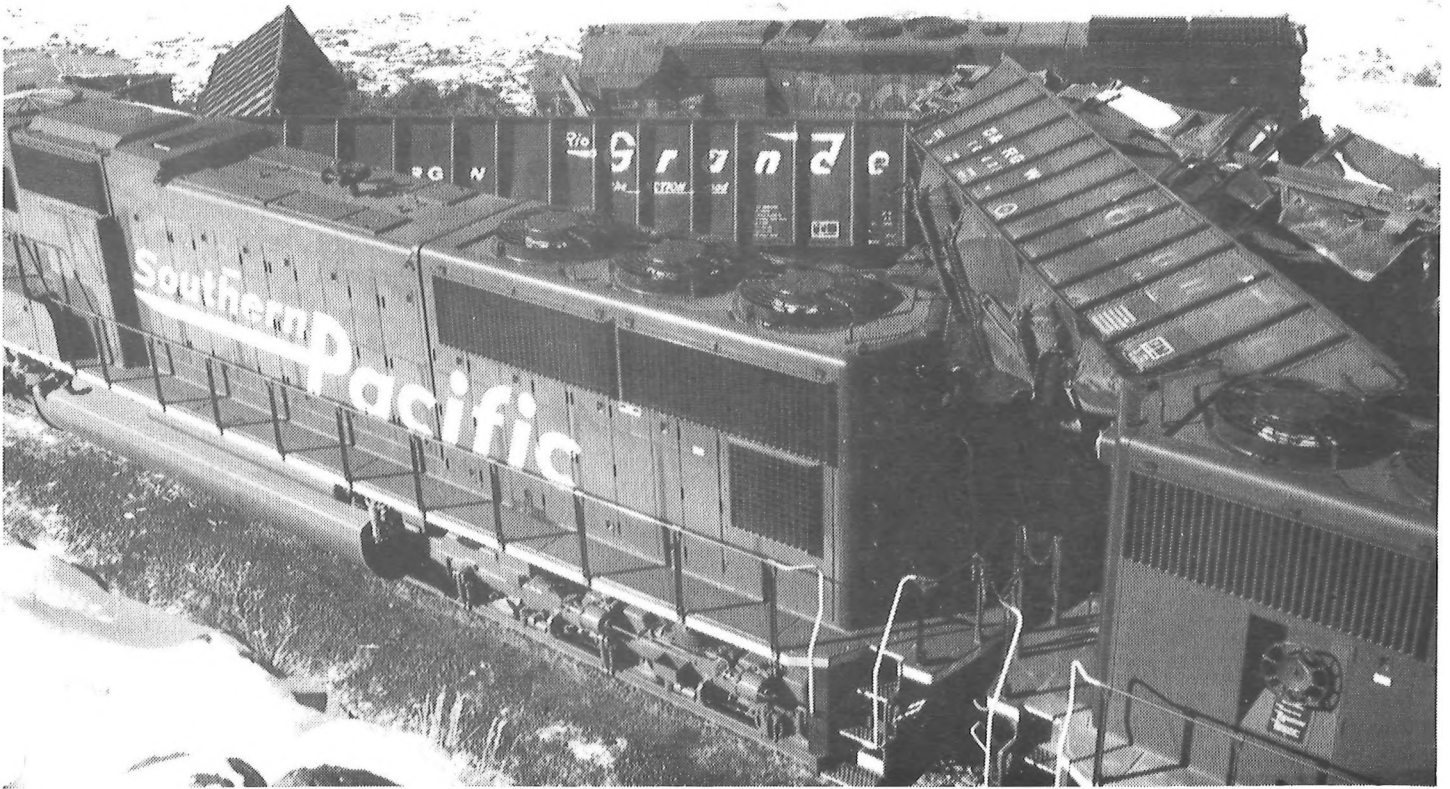
While adults will enjoy all aspects of the railroad, children will especially enjoy seeing the trains run, and, looking for the many animal scenes along the right-of-way. Parents may wish to tell their children about the infamous "Colorado Timber Croc(odile)" that is usually lurking in the shadows, ready to pounce on unsuspecting railroad personnel!

Should time allow at the January meeting, your editor will present a very short preview of the Colorado & Western via slides.

Entrance to the layout will be made by following signs pointing to the garage-side walkway leading to the back patio door.

We hope to see many of you take advantage of this family outing and look forward to greeting each of you. (Jim Trowbridge)





A Southern Pacific Wreck Train passes alongside the massive pileup on Tennessee Pass the day after the wreck, November 23, 1994. The train was a special freight of Taconite iron ore pellets from Minnesota to Geneva, UT. (Sherm Connors Photograph)

THE COMBUSTION CORNER— CURRENT RAILROAD HAPPENINGS

by Chip Sherman

SOUTHERN PACIFIC TACONITE TRAIN DERAILS ON TENNESSEE PASS. Southern Pacific westbound train 2MNGVC 17 (second Minnesota to Geneva, Coal of Nov. 17) was descending the north side of Tennessee Pass near Leadville, CO, on November 22, 1994, around 2:45 a.m. Engineer Thompson went to use the dynamics, but found his train building speed. Behind him were 54 loads, no empties, some 7069 tons of taconite ore. The train continued to build speed, despite the emergency brakes being applied! Only the first 20 cars set up with their brakes. The train reached 5 mph as it hurtled down the steep grade and into the curves at milepost 283.6 between Tennessee Pass and Pando. There, the train left the rails.

The lead unit, Rio Grande SD40T-2 #5369, stayed on the rails. D&RGW SD40T-2 #5348, SP SD45 #8670 (recently rebuilt by Morrison Knudsen) and D&RGW SD40T-2 #5370, along with 51 cars, derailed. Very little track damage resulted from the train leaving the track. Most of the hopper cars landed on their sides or were upside-down along the twisting curves, just west of Colorado Highway 24.

Conductor Michael R. Perkins, 48, of Pueblo, CO, was injured. He suffered a broken arm, broken leg and other injuries. He was checking on the dynamics aboard SP 8670 when it derailed. Snow and dirt crushed him against the cab wall on the cab's fireman's side.

The train is one of the high contact won by Southern Pacific in 1994 to move taconite iron ore pellets from Minnesota to Geneva Steel Co., Vineyard, UT, plant.

The Tennessee Pass line was closed from November 22nd until the 25th, around 10:30 p.m. Numerous SP trains were detoured via the Joint Line, using Santa Fe crews, through Denver, then west on the SP's Mof-fat Tunnel Line. This included two taconite trains lead by General Electric model DASH 9-44CW 8116 and 8130 which traversed the Joint Line on November 23rd with loaded taconite trains. One of the last detour trains with three SP 9700-series GP-60's went east over the Burlington Northern from Denver, CO, on Saturday, Nov. 26th.

The derailed units were rerailed and moved back to SP's Denver North Yard. They arrived at North Yard, December 7, 1994. Their future disposition is yet to be determined. (Rocky Mtn. News, 11/23/94, The SPy, C.W.)

BURLINGTON NORTHERN (BN) OPERATES SANTA CLAUS TRAIN IN EASTERN COLORADO. The BN Christmas Train made stops at several eastern Colorado cities and towns the week of December 12-16, 1994. BN GP38-2 #2358 had the honor of pulling the special train from Holdrege, NE, west to Benkelman, Wray, Akron, Brush, Sterling, and Peetz, Colorado. Our Rail Report reporter, Jon Bockelman, was raced east to Wray and found flatcar 630538 decorated with a manger scene. The car also had Christmas trees and a sound system playing Christmas music. Santa and Mrs. Claus rode BN caboose 12520. Garland was festively applied, with a Christmas tree inside. Children visited Santa and were given a candy cane and a bag of goodies. Way to go BN Safety Committee--a first class job!

The BN Christmas Train is making its first stop ever in Wray. It is sponsored by the Burlington Northern Safety Committee. For the past several years, the train has been using a northern route that took it to Cheyenne, WY, but organizers decided to run from Lincoln, NE, to Brush, CO. (Tom Peyton, Jon Bockelman, BN)

MOVIE TRAIN STORED AT SOUTHERN PACIFIC'S DIESEL SHOP. The train used for filming Under Seige II: Dark Territory, starring Stephen Seagal, was moved to the SP's Denver Locomotive Shop (former Rio Grande Burnham Shops) on November 21, 1994. It remained there until December 10th, when it moved to Denver Union Station and was

placed on Track Four. GP-7 #1804 was then taken to the BN's 23rd Street Diesel Shop for work. Helm Leasing's SD40-2 #4404, was returned to the lessor and was seen back on the BN in early December. (Dr. Five Chime, C.W., and the Colorado Zephyr)

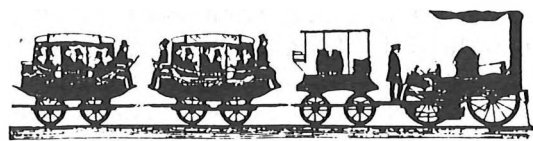
CHICAGO & ILLINOIS MIDLAND (C&IM) SD38-2 VISITS DENVER VIA SP. C&IM SD38-2 #72 was in Denver at SP's North Yard on November 24, 1994. The unit comes from the Springfield, IL, based operation owned by Commonwealth Edison. The unit is one of six SD38-2's #70-75 and built in 1974. (Lou & Andre' DeMattia)

SWAP 'N SHOP

Personal ads are accepted from members for items to be listed for SALE or TRADE or WANTED. We cannot enter into any correspondence, nor will we appraise them.

FOR SALE: Volumes I, II and III of Rio Grande Southern (Sundance Publications). Retail for \$65 each--selling all three for \$120.00 plus shipping postage & insurance. All are new and unused (make up an extra set). John Dillavou, 1270 So. Grape Street Denver, CO 80222-3231. (303) 756-7965, evenings, 5:00 to 9:00 pm, MST.

FOR SALE: Used books, good condition. Rails Around Gold Hill, Cafky, \$295.00; RR's of Nevada, Vols. I & II, Myrick, \$85.00 each; The Colorado Road, Wagner, \$95.00; RR's of Arizona, Vols. I, II & III, Myrick, \$75.00 each. In addition to the above titles, I have 50 other good railroad books for sale. Send SASE for list. Ed Gerlits, 1540 Routt Street, Lakewood, CO 80215.



ANNUAL NEAL MILLER PHOTOGRAPH

As has been his custom since 1951, Neal handed out his annual "Christmas" photograph! This year's scene was taken on January 2, 1955 of UP 4004 in 10° weather at Cheyenne, Wyoming. A reproduction is provided elsewhere in this month's newsletter. As always, our appreciative "Thanks" to Neal!!



The RMRR Club's Fort Collins Municipal Railway Car #22 is loaded onto a flatbed truck and trailer on November 26, 1994. The car is bound for Colorado Springs where it has been leased to the Pike's Peak Historical Street Railway Foundation for restoration and use on tracks in Colorado Springs. Full operation is scheduled for 1999. (Sherm Conners Photo)

**FORT COLLINS MUNICIPAL RAILWAY CAR #22
LEASED TO THE PIKE'S PEAK HISTORICAL
STREET RAILWAY FOUNDATION**

Dare we call it a miracle? That is what the Pike's Peak Historical Street Railway Foundation called it when they leased the Birney car #22 from the Rocky Mountain Railroad Club. This lease is for a term of 15 years with provisions for a RMRRC member to be on the restoration committee.

Car #22 was taken to Colorado Springs on November 26, 1994, where it was cleaned up and decorated and placed in the Christmas Festival of Lights Parade on December 3rd. The RMRRC was represented by Darrell Arndt, Tom Peyton and Mike and Linda Johnson. The group was very fortunate to have a heater placed in the trolley to keep them toasty warm on a cold day! Over 100,000 people enjoyed the parade and were really excited about the trolley--and the PPHSRF has gained much more support since then.

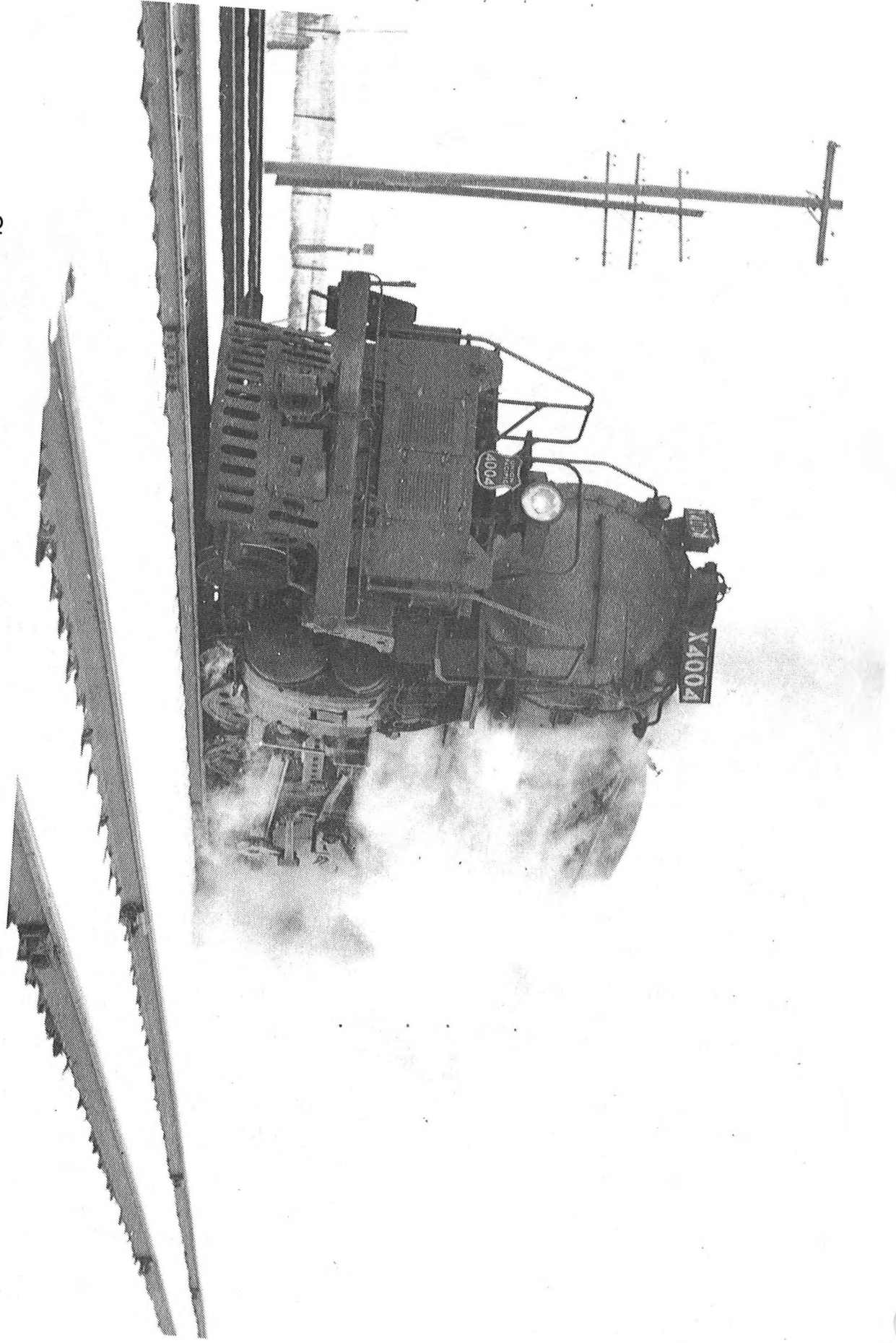
The PPHSRF is planning to start restoration of Car #22 in January with daily service starting in 1999. In addition to the #22, the Foundation has a trolley that ran on

the Colorado Springs system, Car #59.

These two trolleys are located inside the old Rock Island Railroad roundhouse, itself located on Steel Drive in the Roswell Community area in northern Colorado Springs. This structure is right next to the SP/ATSF/BN joint line.

The Pike's Peak Historical Street Railway Foundation was formed over twelve years ago to bring trolleys back to Colorado Springs. They have been working quietly over the years getting equipment and volunteers together to make this "miracle" happen. The PPHSRF will be making a presentation at one of the Club's regular monthly meetings later this year to show Club members their plans and answer any questions that members might have. Until then, if anyone has any questions about this joint project, they may direct their questions to the President and we will do our best to answer those questions through the pages of the Rail Report. Feel free to direct your questions to either the Club's phone or to the Club's mailing address.

(Mike Johnson)



Cheyenne, Wyoming. January 2, 1955. UP 4004 in 10° weather. NEAL R. MILLER



BOOK, VIDEO & AUDIO REVIEWS

RAILS 'N' TALES by Club member Irving E. August. \$6.50, postpaid. Irv August, 1990
Applewood Drive, Lakewood, CO 80215-2524.

This 72-page booklet was prepared by Irv as a Christmas present for close friends. The run was more than his Christmas list, and so, copies are available to Club members at a very reasonable price. (\$5.00 plus \$1.50 for 1st Class postage)

This volume is a collection of personal events that have appeared in the Rocky Mountain Rail Report over the past few years plus a few new stories to round things out. You will probably recall such stories as "Memories of the Narrow Gauge," "There are no Trains to Salida," and "A Rocky counter on Cumbres Pass." This booklet is very well done with a color photo on the front cover and around 40 B&W photos to accompany the fourteen stories.

Every Club member should take advantage of this offer by Irv. You'll certainly enjoy having these stories in one volume.

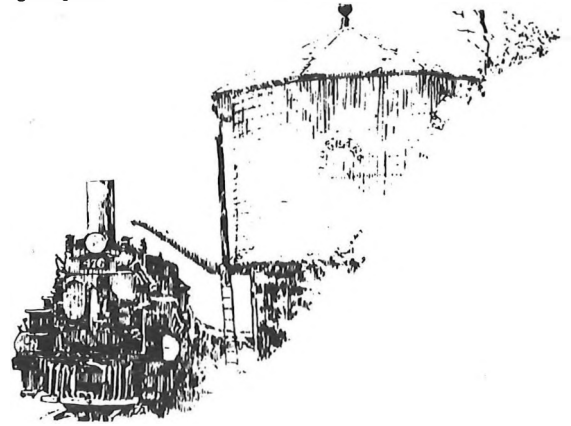
BEYOND THE THIRD RAIL with MONTE BALLOUGH and HIS CAMERA by Club member Doris B. Osterwald. \$44.95. Western Guideways, Ltd., P. O. Box 15532, Lakewood, CO 80215. (303) 237-0583.

This book is the result of over 20 years of research by Doris about the history connected with the photo collection of Monte George Ballough, a man who settled in mining town of Rico, Colorado in the early 1890's. Between 1895 and 1922, Ballough worked as a miner, as a photographer, and as a carman for both the Rio Grande Southern and the Denver & Rio Grande Railroads.

This material was presented to the RMRRRC at one of its recent meetings and was well received. The priceless photographs feature spectacular views of the San Juan Mountains

and the towns of Rico, Dunton, Chama and Durango. Also included are railroad scenes, train wrecks, Indian portraits and Indian ruins, and never-before-published photos taken along the Fourth Division of the Denver & Rio Grande and of the Rio Grande Southern Railroads.

This is a truly fine addition to your personal libraries and your editor recommends it highly.



NEWS FROM THE DURANGO & SILVERTON NARROW GAUGE RAILROAD

The Durango & Silverton NG RR has decided to extend the winter train schedule to run through the ski season, largely because of a successful marketing effort by Purgatory Resort.

The railroad reports that it has 1,200 seats reserved for its traditional Winter Holiday Train, 10 percent ahead of what it had this time last year. In addition, the D&SNG is putting together charters for large groups that have requested runs beyond the peak holiday season.

The train began operating November 23rd and, rather than concluding January 1, 1995, will continue through the end of Purgatory's ski season, which wraps up April 9, 1995.

The train departs Durango at 10:00 a.m. daily and returns at 3:00 p.m. Regular service to Cascade Canyon Wye will resume in mid to late April and regular service to Silverton will resume April 29, 1995.

A special offer is available from November 23-December 16; January 2-March 11, 1995; and March 20-April 9, 1995 when KIDS RIDE

FREE (11 years old and under) who are accompanied by an Adult Fare Ticket Holder! Adult fare is \$36.15 and Child fare is \$18.05. Reservations can be made by calling (303) 247-2733.

The D&SNG wrapped up its regular season on October 30th with 198,694 passengers, down slightly from 1993's total of 201,487. (Ed Gerlit's passed this information on to us from a Durango Herald article by Karen Kunde and a flyer from the Durango & Silverton Narrow Gauge Railroad)

In other news, not as positive, the D&SNG has been billed by the U. S. Forest Service for \$450,000 for expenses incurred to douse a fire allegedly started by sparks from one of the D&SNG's steam locomotives. The bill includes the costs of helicopters, slurry bombers and more than 200 firefighters brought in to extinguish a 270-acre fire at Mitchell Lakes near Hermosa last July 5th. As of December 20, 1994, the railroad had declined comment. We will keep our readers informed. (Denver Post article, 12/20/94)

HELP WANTED

Our Club is always striving to involve more members in the day-to-day activities of the Club. Now, we need a Salesman or a Saleslady. This volunteer needs to enjoy visiting hobby shops or train stores to increase the sales of the Club's book, "Georgetown and the Loop," If you would like to volunteer,

please contact one of the Club's officers or Bob Griswold, Chairman of the Publications Committee, who can be reached at 303-756-7814 or 3470 South Poplar Street, Denver, Colorado 80224. (Bob Griswold)

NEWSLETTER CONTRIBUTIONS

We are always happy to receive information about railroading in the Rocky Mountain region and, very often, as space permits, use other regional data. We encourage our members to participate in the newsletter. Should you have something you wish to share with fellow members, please send it to the Rail Report, 502 South Cody St., Lakewood, Colorado 80226.

Bulletin

FROM THE EDITOR "THANKS!"

A short and sweet "Thanks" to our outgoing board members, Jim Hurt and Mike Johnson, AND, a special "Thanks" to the three officers stepping down: President Roger Callender, Vice President Sherm Conners, and, especially, Treasurer Larry Lombard whose efforts on behalf of the Club can never be overstated! All of these men were excellent to work with and served the Club well!! (Jim Trowbridge)

ROCKY MOUNTAIN



RAILROAD CLUB

BOX 2391
DENVER, COLORADO 80201

FIRST CLASS MAIL
U. S. Postage
PAID
Denver, Colorado
Permit No. 1873

RONALD O. GABEL
5535 S. QUAIL ST.
LITTLETON, CO. 80127-1803

First Class Mail