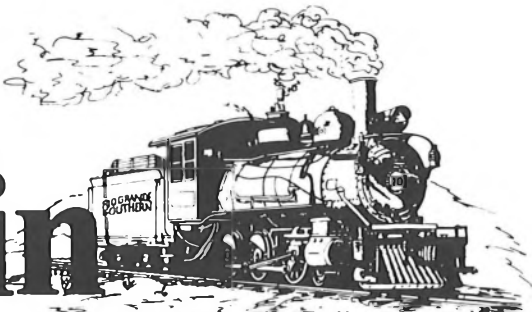


Rocky Mountain RAIL REPORT



THE ROCKY MOUNTAIN RAILROAD CLUB

MEETING SCHEDULE:

January 12, 1993 -- 7:30 p.m.

Southeast wing of Christ Episcopal Church, 2950 South University at Bates. Off-street parking at rear (east) of meeting hall. Please use the building's south entrance.

Jim Trowbridge..... Editor
Les Grenz..... Associate Editor
Joseph E. Priselac..... President
Roger Callender..... Vice President
Bill Gordon..... Secretary
Larry Lombard..... Treasurer

Send all items for publication to: Rocky Mountain Rail Report, c/o Jim Trowbridge, Editor, 502 South Cody Street, Lakewood, Colorado 80226.

COPY DEADLINE ALL copy for publication in the February, 1993 Rail Report is due no later than January 12, 1993!!

MEMBERSHIP INQUIRIES

Please refer address changes, new memberships, dues payments, lost newsletters, missing newsletter pages, etc. to:

Tom Lawry, Membership Chairman
c/o Rocky Mountain Railroad Club
P. O. Box 2391
Denver, Colorado 80201

January, 1993..... No. 400
Club Telephone..... (303) 431-4354
P. O. Box 2391..... Denver, Colorado 80201

CURRENT NEWS AND HISTORICAL NOTES OF ROCKY MOUNTAIN RAILROADING PUBLISHED MONTHLY FOR ITS MEMBERS BY THE ROCKY MOUNTAIN RAILROAD CLUB.

CLUB MEMBERSHIP

Membership in the Rocky Mountain Railroad Club may be obtained by sending \$24.00 (\$20.00 annual dues plus enrollment fee of \$4.00) to: ROCKY MOUNTAIN RAILROAD CLUB, P. O. Box 2391, Denver, Colorado 80201. An Associate Membership for Spouses and Children is also available for a yearly rate of \$10.00. On regular memberships, new members joining after April of each year may obtain membership for a payment of \$4.00 enrollment fee plus \$2.00 for each month remaining in the calendar year. Dues for the next year are solicited in November of the current year.

JANUARY 12 PROGRAM

Imagine the Rio Grande Southern operating today in South America! The Guayaquil and Quito, and, Simbambe and Cuenca Railroads in Ecuador provide just such a vision.

Join Frank Stapleton in a slide presentation of two journeys (1990 and 1992) south of the Equator and ride these two railroads--Cab rides, runbys, sitting on the engine pilots, riding on top of rail buses,

and views of mountain railroading in the Andes using U.S.-built Baldwin locomotives and Thomas-built Rail Buses on a 42-inch gauge railroad that parallels the RGS.

PUBLISHER'S STATEMENT

The Rocky Mountain Rail Report (ISSN 1040-9223) is published by the Rocky Mountain Railroad Club at 212 Union Station, 17th and Wynkoop Streets, Denver, Colorado 80201 for \$14.00 per year which is deducted from member's dues. First Class postage paid at Denver, Colorado. Postmaster: Send address changes to the Rocky Mountain Rail Report, Box 2391, Denver, Colorado 80201.

DECEMBER PROGRAM AND MEETING

We were treated to a wonderful program at the December meeting. Long-time member, Jim Ehernberger, presented his "Recollections of Rocky Mountain Railroad Club Trips," covering a wide variety of Club trips over the 50's, 60's, 70's and 80's. Included were events on the Union Pacific Mainline and some branches, the Colorado & Southern Mainline and branches, the Denver & Rio Grande Standard and Narrow Gauge and many, many other lines, showing the unique variety of trips and equipment used. In addition, Jim presented photos of unique and historic equipment Club members saw along the way as well as samples of tickets and programs, interspersed with interesting stories about events and railroads.

Our thanks to Jim for ending the year on such a grand note. This was a perfect program for the December meeting.

The December meeting was also the retirement of Vice President and Program Chairman, Frank Stapleton--at least for the near future. Frank has done an outstanding job in securing "High-Grade" programs this past year and was also an active and trusted member of the board/officers. Frank will be catching up on many personal projects, but intends to remain on the scene, perhaps continuing on the Club's Internal Audit Committee. We hope to see Frank back as a board member or officer soon. Thanks, Frank!

As is tradition, food and beverage was served to those attending the December

meeting and a grand time was had by all. We wish to extend out thanks to all those members and wives who graciously arranged for refreshments and served the rest of the crowd. Their time and effort was greatly appreciated.

ELECTIONS

New Officers were elected at the December meeting and include: Joe Priselac as President, Roger Callender as Vice President, Bill Gordon as Secretary and Larry Lombard as Treasurer.

Election of Board Members was put off until the January meeting. Much to the surprise of all, we ended up with five Club members running for the Board and we ended up without ballots. A motion was made to hold the election over until January to insure an accurate count of votes and also allow the Rail Report to publish information about each of the nominees. Ballots are now being prepared and we will announce the new Board members in the February Rail Report. The following members have been nominated:

Berens, Rich. Rich has been a member for about thirty years and previously served on the Board during 1966-67. Rich is a retired teamster, a Denver native and a Rio Grande railfan, probably due to his father being a boilermaker at the Grande's Burnham Shops.

Hurt, Jim. Jim has been a member of the Club for about twenty-five years and has recently been active on the Club's Interurban "25" project as well as a volunteer with the Platte Valley Trolley. Jim is a retired Physicist from IBM, lives in Boulder, and a KATY modeler and photographer whose father telegraphed for that Road.

Johnson, Mike. Mike is a relatively new member of about two years. Mike's railroad interests are directed to modeling the Rio Grande and ATSF in three scales--"G", "HO", and "N". Mike is a schoolbus mechanic for District #20 in Colorado Springs and is also a volunteer fireman/assistant chief for the Woodman Valley Fire Department.

Lort, Art. Art has been a member of the Club for about eight years and has been

working on the Club's newsletter mailing committee. Art just retired from the DPS system and taught Industrial Arts. He now works at Caboose Hobbies and models the D&RGW Marshall Pass Area in HO/HOn3. He also worked on the Georgetown Loop Railroad as a conductor in 1992.

Wilcoxon, Bob. Bob has been a member of the Club since 1985. He has worked on the Club's equipment at the Colorado RR Museum and manned the Club's booths at various shows. Bob is in Real Estate, grew up in Wyoming where his Dad worked for the Union Pacific. Naturally, Bob is a UP buff and has had particular interest in the Club's UP trips.



NEW MEMBERS

The Rocky Mountain Railroad Club wishes to enthusiastically welcome the following new members:

Mike Capra	Denver, CO
David A. Henry	Englewood, CO
Bruce Johnson	Commerce City, CO
Joel Laufer	Denver, CO

ASSOCIATE MEMBERS:

Shirley Blouch	Westminster, CO
Grace Hidahl	Denver, CO
Alice Webber	Coppell, TX

ANNUAL NEIL MILLER PHOTOGRAPH

A copy of Neil's annual photograph is presented in this issue of the Rail Report. It shows UP 3964 and 4022 near Colores, WY, September 3, 1956. Our thanks to Neil for the gift (now a twenty-five-plus year tradition).

NEWSLETTER CONTRIBUTIONS

We are always happy to receive information about railroading in the Rocky Mountain region and, very often, as space permits, use other regional data. We encourage our members to participate in the newsletter. Should you have something you wish to share with fellow members, please send it to the attention of the editor, ROCKY MOUNTAIN RAIL REPORT, 502 South Cody St., Lakewood, Colorado 80226.

1993 PROPOSED SCHEDULE OF EVENTS

January 12	Regular Monthly Meeting
January 30	Rio Grande Ski Train Trip
February 9	Regular Monthly Meeting
March 9	Regular Monthly Meeting
March*	X Rio Grande/SP Burnham Shops Tour
April 13	Regular Monthly Meeting
May 11	Regular Monthly Meeting
May 15	X Union Pacific Steam 40th Anniversary Excursion. Denver to Laramie & Return
June 5	X Urich Locomotive Works Field Trip/Strasburg, CO
June 8	Regular Monthly Meeting
July 10	Denver & New Orleans RR Field Trip
July 13	Regular Monthly Meeting
August 10	Regular Monthly Meeting
August 21	X D&RGW/SP Tennessee Pass Field Trip
August 22	X Leadville and Colorado & Southern RR Excursion
September 14	Regular Monthly Meeting
October 1-10	Mexico/Copper Canyon Excursion
October 16	X ANNUAL BANQUET
November 9	Regular Monthly Meeting
December 14	ELECTIONS and Regular Monthly Meeting

*Date to be announced later. Additions, deletions and corrections will be made in the Rail Report throughout the year. Be sure to look for details monthly!!

MEMBERSHIP DUES FOR 1993

Everyone received a dues notice along with the November newsletter. Your cooperation in returning your dues payment as soon as possible will be greatly appreciated. This will greatly aid both Tom Lawry, Membership Chairman and Larry Lombard, Treasurer. In addition, we will be able to get membership cards out early if a substantial number of dues get in early!!

You will note that we have requested your full 9-digit zip code. [You can easily obtain this number on any "junk mail" you may receive as it is required by the Postal Service to get their lowest mailing rates] We know that this zip code will be required in the future and it may now get your newsletter to you faster. Your cooperation in this matter is especially appreciated.

If you have misplaced the renewal notice form, another copy may be obtained at the Club's regular monthly meeting, or, you may use the following form:

1993 DUES RENEWAL

NAME _____
Please Print or Type

ADDRESS _____
_____ Zip _____
9-Digit

TELEPHONE () _____

NAME *(Spouse)* _____

NAME *(Child)* _____

NAME *(Child)* _____

1993 Primary Membership \$ 20.00

1993 Associate Membership*
@ \$10.00 each[]
Number

Total..... \$ _____

*Associate members receive their own membership card and assigned number that transfers to a regular membership should they desire it later. Only one newsletter is sent to each family unit.

ANNUAL BOOK DRAWING — 1993

The Annual Book Drawing, held at the April Regular Club Meeting, provides additional funds used toward the preservation of the Rocky Mountain Railroad Club's historical railroad equipment at the Colorado Railroad Museum.

Prizes to be awarded this year are as follows: 1st Prize--*Otto Perry's Railroad Pilgrimage*, (Sundance Publications, Ltd.); 2nd Prize--*Memorial Edition--Denver, South Park & Pacific*, by M. C. Poor (RMRRRC Publication); and, 3rd Prize--*Denver & Intermountain No. 25 PRINT*, by Joe Priselac.

Chances are \$2.00 each and you may enter as many times as you wish. Coupons are provided for your convenience. *Please be sure to fill out each coupon with your name and address!* Additional coupons may be created by members by photocopying the ones provided.

Send your coupons to: Rocky Mountain Railroad Club, Annual Book Drawing, P. O. Box 2391, Denver, Colorado 80201.

ROCKY MOUNTAIN RAILROAD CLUB
1993 Book Drawing - April 13, 1993

NAME _____

ADDRESS _____

Zip _____

Please Print or Type. Winners need not be present.

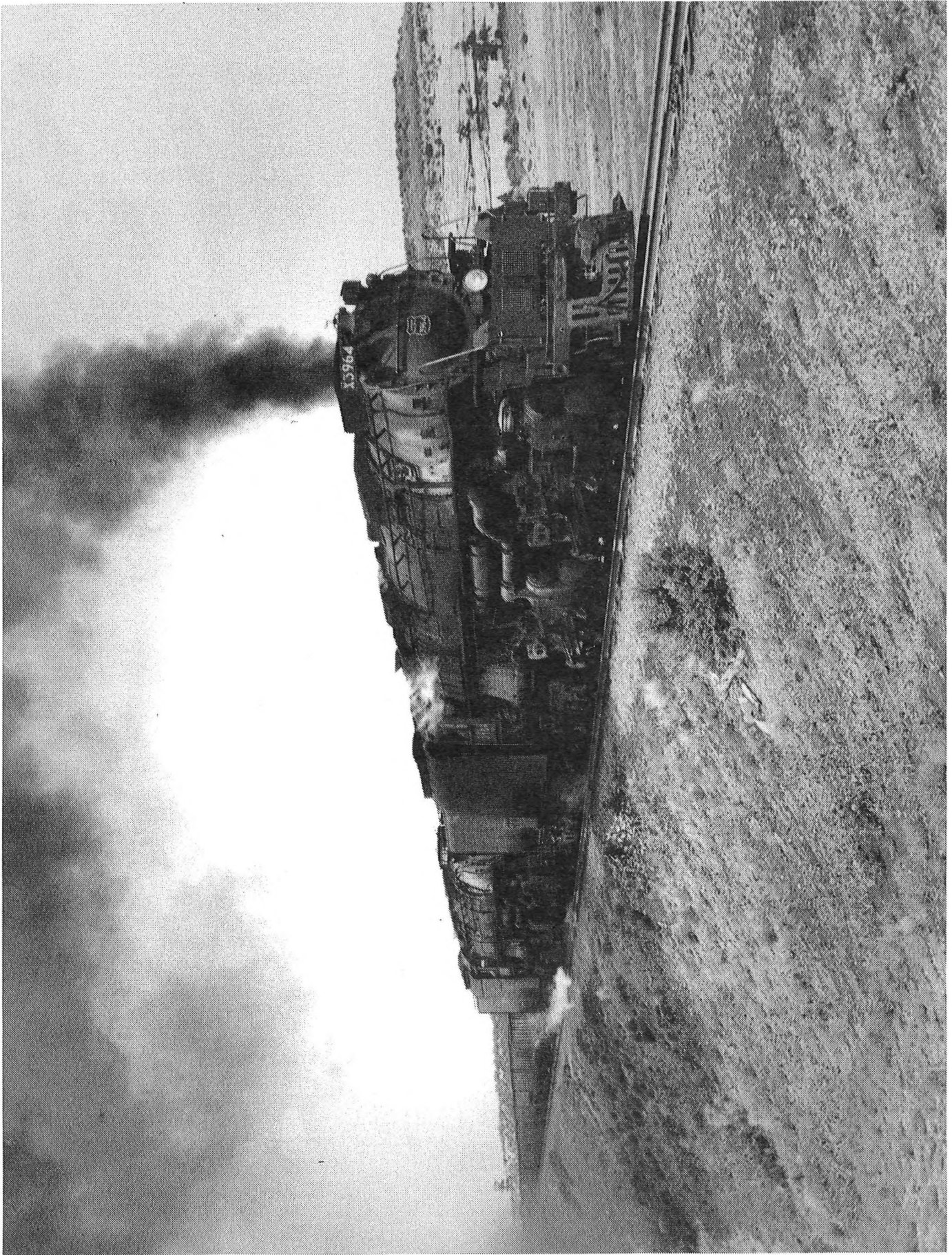
ROCKY MOUNTAIN RAILROAD CLUB
1993 Book Drawing - April 13, 1993

NAME _____

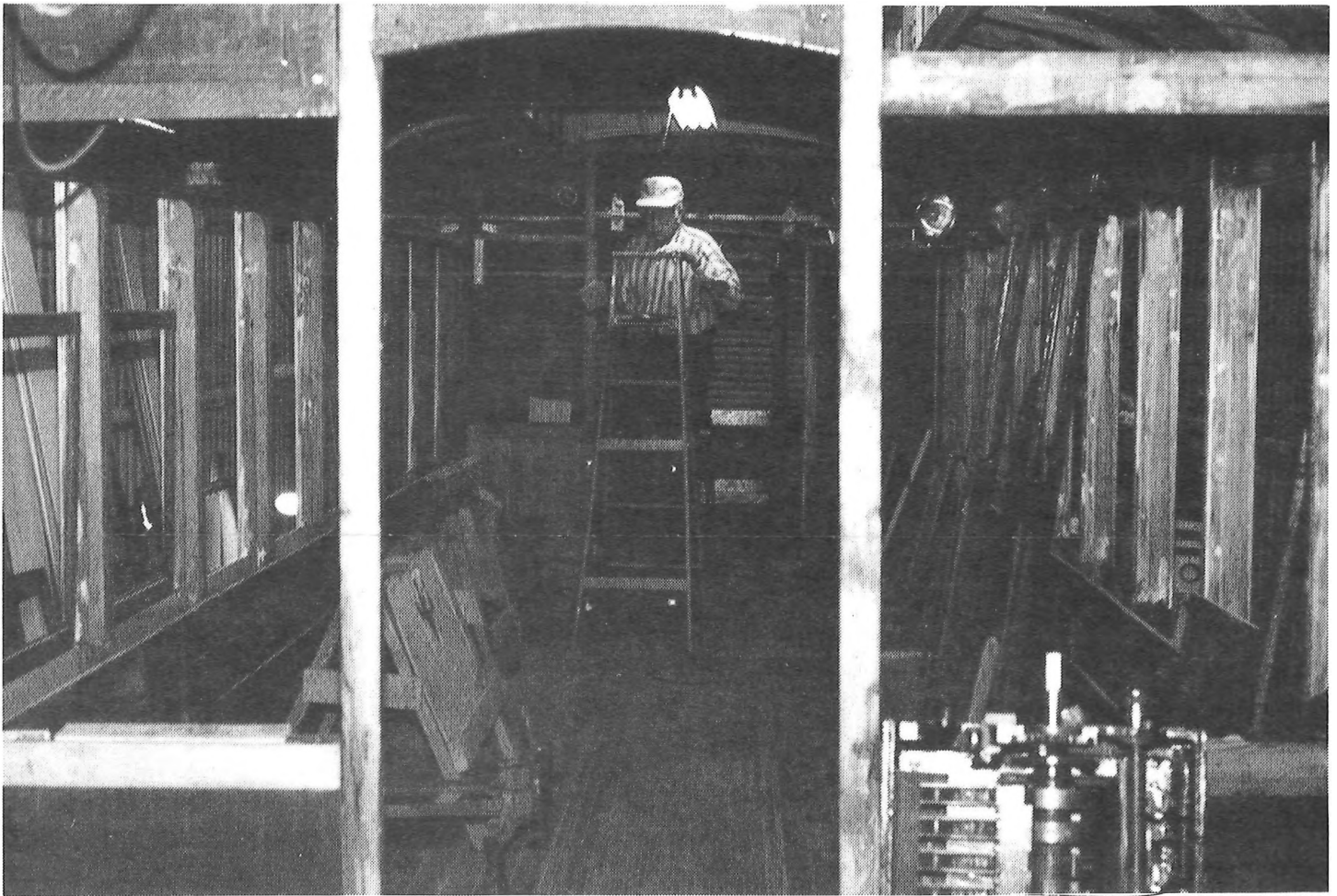
ADDRESS _____

Zip _____

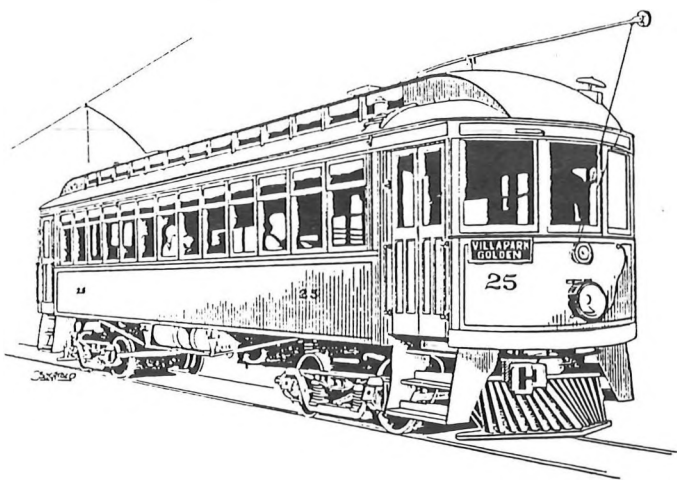
Please Print or Type. Winners need not be present.



U.P. 3964 and 4022 near Colores, Wyoming, September 3, 1956. NEAL R. MILLER



The November 14, 1992 "No. 25" OPEN HOUSE was a great success with some 60+ members and friends taking time to visit the project. Volunteers served as hosts, and, when not doing that, continued to work on the Club's Interurban Car. Here we see Mel Ott performing some tasks in the main passenger compartment. (Jim Trowbridge Photograph)



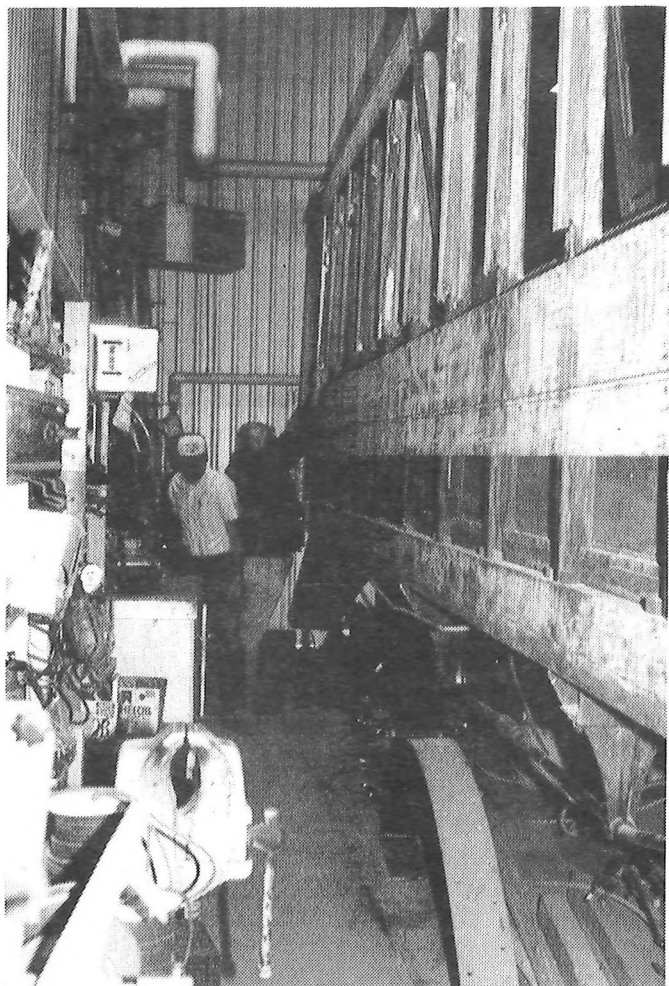
OPEN HOUSE FOR THE "NO. 25"

The Club's Open House for the Interurban No. 25 was doubly successful. In addition to the scheduled Saturday, November 14th,

Open House to which some 60+ members and friends attended, another Open House was held on Monday, the 16th for folks at the Federal Center to which some 90+ attended. The 90+ on Monday was contributed to the super cooperation of the Federal Center personnel in advertising the event.

Between the two Open Houses, the 150+ folks included many people who not only remembered the Denver to Golden Interurban line, but remember riding it, and, on the 25! In addition, one visitor turned out to have been a trolley operator on the line. Some of these folks brought photographs along to share with others, showing family members on outings.

Additional success came in the form of contributions of over \$125.00, and, most



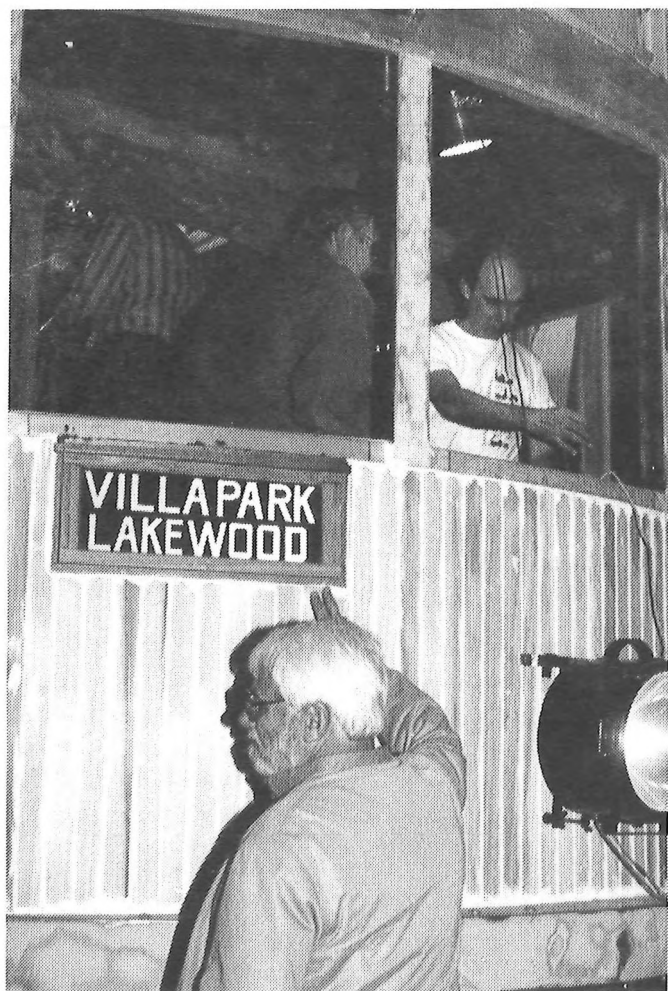
Club members, Darrell Arndt (left) and Bill Gordon (right) work on the "B" end of the No. 25. New wood siding will soon be positioned over the exposed frame; but, for the time being, we can learn a great deal about car construction.

(Jim Trowbridge Photograph)

important, volunteers to work on the project!! In fact, many new volunteers have special talents/skills that will help to address projects requiring skilled knowledge and abilities, including one man who offered to letter the car.

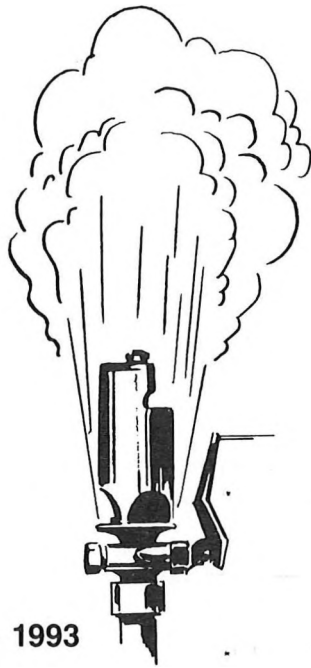
It was somewhat amusing (in light of the wonderful publicity from the Rocky Mountain News, Lakewood Sentinel, etc.) to see the excited looks and hear the equally surprised comments from Federal Center workers who did not know that this project was being carried on right under their noses--some working in buildings right next to the Engine House that the Club has been using these past four-plus years!

All those who have put so much of their time and energy into this project can be proud of their accomplishments thus far and the many, many outstanding comments from visitors. The Club wishes to express its appreciation to all. In addition, we wish to mention some of those who were in attendance at the two Open Houses and, not only worked on the car, but made themselves hosts to the Club's members and guests. These included: Darrell Arndt, Bill Gordon, Dick Kremers, Charlie Max, Mel Ott, Tom Peyton and Joe Priselac. (Jim Trowbridge)



Members and friends converged on Car No. 25 to inspect the work completed thus far. The No. 25 volunteers were very cooperative in showing off the car and answering questions. Here we see Tom Peyton (right window, white T-shirt) explaining the controls to a Club member. (Jim Trowbridge Photograph)





UNION PACIFIC STEAM — 1993

It was a memorable day on May 17, 1953, when the Rocky Mountain Railroad Club began its long association with the Union Pacific Railroad and mainline steam excursions. Behind UP Challenger #3967, the Rocky Mountain Railroad Club embarked upon these premier excursions with an exciting, never-to-be-forgotten trip from Denver to Laramie and return. It was with this trip that the Club developed its reputation for offering the finest photo runby opportunities on standard gauge, mainline steam excursions in the U.S.

In 1993, the Union Pacific Railroad and the Rocky Mountain Railroad Club will celebrate and commemorate the 40th Anniversary of this historic excursion. On Saturday, May 15, 1993, a stunning Union Pacific excursion train of approximately 18 cars, headed by giant Challenger steam power, will pull out of Denver Union Station for a long 300-mile round trip to Laramie, Wyoming. In true Rocky Mountain Railroad Club tradition, there will be many scenic mountain photo runbys on the UP's mainline over historic Sherman Hill.

Planning for this trip is underway and the Rocky Mountain Railroad Club is now negotiating with the Union Pacific. This memorable trip will be one not to be missed. Begin making your plans to participate with the Club on this rare excursion opportunity. More detailed information will be forthcoming. (Bud Lehrer)

D&RGW/SP SKI TRAIN EXCURSION

The Rocky Mountain Railroad Club is pleased to announce the first trip for the 1993 season. The trip will be aboard the D&RGW/SP Ski Train to Winter Park. This ever popular trip has been scheduled for Saturday, January 30, 1993.

This year, we have decided to run a simpler and less expensive trip. The fare will be \$25 per person which will include a round-trip ticket aboard the Ski Train.

Activities available at Winter Park Ski area include cross country and down hill skiing, ice skating, sleigh rides, swimming, rollerskating, snowmobiling and tubing/sledding. There are also free shuttle buses between the ski resort and the towns of Winter Park and Fraser.

If you're considering a trip on the Ski Train in the near future, this may be the best time to book. Fares on the Ski Train jump to \$30 per person on the weekend following our trip. Tickets will be available at the November and December meetings or can be purchased by completing the form below and mailing it with a check and a stamped, self-addressed envelope to: The Rocky Mountain Railroad Club, c/o Hugh Alexander, Ticket Chairman, 700 So. Elizabeth, Denver, Colorado 80209. (Alan Greene)



SKI TRAIN EXCURSION
Order Form

NAME _____

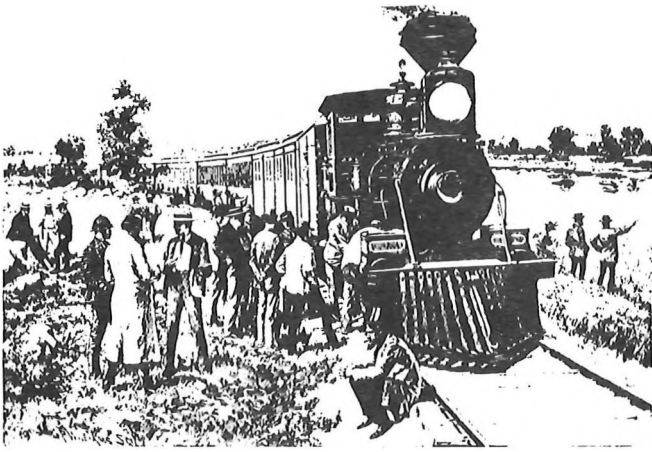
ADDRESS _____

Zip _____

Telephone () _____

Please send _____ tickets for the Ski Train excursion @ \$25.00 each.

Total Enclosed \$ _____



FROM THE PRESIDENT — RMRR BOARD NEWS

Due to the Thanksgiving four-day holiday weekend, the regular bi-monthly meeting of the Officers and Board of Directors of the Club was moved up one week and held November 20, 1992, in Room 200 of Denver Union Station. Here is a brief synopsis of business discussed and motions adopted:

As reported in the November, 1992 issue of the Rail Report, a contract has been entered into with Wickerworks Video Productions Inc. to transfer the 50,000 feet of 16mm Otto Perry historic railroad movies from the Club's archives to 1" x 1-hour tape at a cost of about \$10,000. At this time, the project is well underway and Bill Gould, Films and Video Chairman, reports that the first tapes reviewed are remarkable in clarity and color. Wickerworks is the only facility in this region that has a Rank-Cintel machine that does film-to-tape transfer and is considered the "standard" of the industry for color correction. On the subject of Videos, a recent letter from Alva Morrison of Sunday River Productions, who markets the Otto Perry "Rio Grande Southern" video tape, stated that the Club has realized \$19,663.17 in royalties from 1982 through 1992. [Editor's note: This shows the potential of the Perry video as one of the few income producing vehicles to the Club in future years, keeping dues among the lowest of any organization that returns so much to its members, the Rail Report being just one example]

As recommended by Frank Stapleton, the Board agreed that in 1992 the Club should have a quality slide projector available

to anyone who volunteers to do a monthly presentation with slides. Frank canvassed the local camera outlets for the best projector at the best price to the Club and received some quotes favorable to purchase by the Club, but, Steve Rasmussen and Brian Bechtold volunteered to check with mail order houses to compare competitive prices and proceed from there. [Editors note: Since Joe wrote his column, it was decided that local equipment and prices were best and a Kodac, top-of-the-line projector was purchased by Frank from Robert Waxman's]

Brian Bechtold is still compiling data from the recent Questionnaires returned by Club members. Over 200 folks filled out the Questionnaires and returned them over a period of several months. This is around 20% of the total membership and the Board felt quite gratified by the interest put forward and is very appreciative of the comments and suggestions received and will try to implement many suggestions where possible and feasible. Many Questionnaires contained pages of written notes which explains some of the delay in reporting the results; however, Brian is hard at work on a summary of the survey and his goal is to have a final draft inserted into the February issue of the Rail Report.

Bob Griswold, Publications Chairman, advised the Board that the second printing of Georgetown and the Loop, the Club's 50th Anniversary publication, is now "Sold Out." Bob submitted printing price estimates to the Board for consideration of a third printing with some additions to the book and after some discussion based on the financial capabilities of the Club at this time and estimating a timeframe to recoup up-front expenditures, a motion was entertained and unanimously approved to have 1,000 copies printed at an estimated cost of just under \$10,000 which includes production and shipping costs. Also included in the motion to reprint was an increase in the retail price to \$39.95. A rather large majority of the 2,200 copies sold to date have been sold to dealers at a standard 40% discount, considerably reducing the Club's investment return (gross profit) In addition, the Board felt that it would take up to 2½ to 3 years to recapture the initial \$10,000 and the increase in price

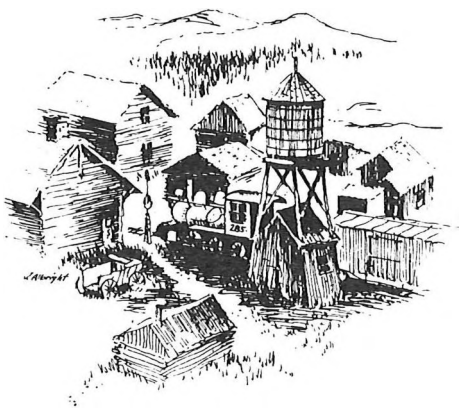
would cover interest on the monies tied up in the reprint.

The Rocky Mountain Railroad Club is known world-wide for its wonderful publications on railroads. There have been quite a few over the past 40+ years, and, in a continuation of that tradition, the Club has two additional books on the drawing board. Bob Griswold is aggressively researching and collecting photographs on the Denver, North-western and Pacific/Denver and Salt Lake/Denver & Rio Grande Western for a possible new Moffat Road book; and, Steve Rasmussen is doing the same on the Denver & Rio Grande Western's La Veta Pass/Alamosa branch. They both advise that completion of research, photo search and writing is two to three years in the future. Material gathered thus far is superb and the prospects are exciting. If the membership has any historic photographs or unpublished information they would like to contribute, please contact Bob or Steve through the Club.

Having no further business, the meeting was adjourned. The next Board meeting is set for January 22, 1993 and open to members who wish to attend. However, due to limited space at Union Station, it is best to call ahead to the Club's telephone listed on the front page of the monthly Rail Report so that seating can be provided.

I would like to take this time to thank all who have given so much of their time and talents to the Club in 1992 and I look forward to working with many of these same people in 1993. So, as 1992 comes to a close, I would like to wish everyone a happy and successful new year.

(Joe Priselac)



CORRECTION ..Rocky Mountain Railroad Club History

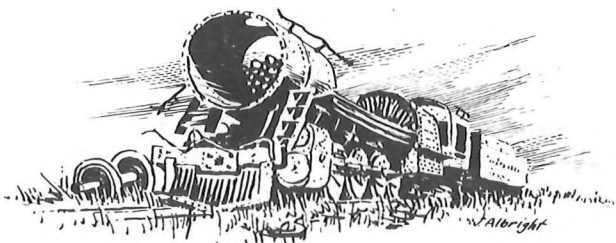
Regarding the Rail Report's coverage of the death of Forest Crossen and his being Charter Member No.1, Dick Kindig (another Charter Member) sent us a correction as to the initial numbering assignment to refine our history. We wish to reprint Dick's letter to Joe Priselac to correct our understanding of how the numbering system got its start:

November 11, 1992...

I was sorry to hear that my old friend, Forest Crossen, had passed away. He had held card No. 1 for a long time, but not from the first days of the Rocky Mountain Railroad Club. I was present at the early meetings of the Railroad Club, and we did not assign numbers to members for several months. I was appointed as Treasurer, and it was several months later that it appeared that members should be assigned numbers. Carl Hewett, who was instrumental in forming the Rocky Mountain Railroad Club, was offered the number 1, but he refused it, for reasons I don't remember. So the charter members were arranged in alphabetical order, and subsequent members received the next number as they joined. However, Forest Crossen was not number 1 at that time; there were at least two others ahead of him in alphabetical order (I remember Mr. Ainsworth and Mr. Calahan, and there may have been others). Over the years, due to deaths, resignations, and non-payment of dues, the earlier members were dropped out, and Forest Crossen moved into number 1, which he held until he died. (Dick Kindig)

Our thanks to Dick for clearing this up and setting the history straight.

The Southern Pacific rumor department has been working overtime this past month..... We have heard this one before, but it has resurfaced again. Rumor has it that the Tennessee Pass mainline route will be permanently closed. The SP has been paying high rates to the UP for its trackage rights from Pueblo to the East, and is looking for a more profitable solution. The idea would be to have all traffic routed via the Moffat Road into Denver and on to the BN for points East. Most of the line over Tennessee Pass would then be torn up, closing one of Colorado's most famous routes.....Rumor number 2 says that the SP is currently negotiating to sell its lines in the San Luis Valley and the connecting La Veta Pass Route to Walsenburg as a shortline operation. Its too early to tell what will happen, but don't wait till summer to take your pictures.....The MAC light rail project continues to make progress. By the time you read this, the Burkhardt Steel Building at I-25 and Broadway will have been demolished to make room for the station site to be located on the property. This will serve as the temporary southern terminal pending future construction of the South Santa Fe extension. Pueblo will get a boost from the project as RTD has already purchased the rail for the project from CF&I steel, adding onto an existing order for 20 miles of 115 lb. rail from San Diego's ever expanding system. The new fleet now has a model number. The cars will be known as "SD100's." As mentioned in past columns, they are being built to San Diego Specs with a few variations:750 volts DC over 600, for improved performance and fewer substations, and, additional winterization features to cope with those Denver snow storms.



PRESERVATION FUND AND BOOK DRAWING

The prizes and winners at the December 8, 1992 meeting are as follows:

Gary Ellison / Rip Van Winkle Railroads
New York

Chris Larscheid / Rail Ventures

Mary Borgia / Southern Pacific Company

Jim Jones / Set of 10 postcards: historic
Colorado RR scenes

Jim Ehernberger / Set of Railway & Locomotive Hist. Society
bulletins, #111/116/118/121

Ron Gavel / Set of CTC Board Magazines

Neil Miller / 1965 UP Calendar

Doug Gorton / Pennsy WWII Print (Reproduction)

Phil Walker / Official Railway Equipment Register, October, 1975

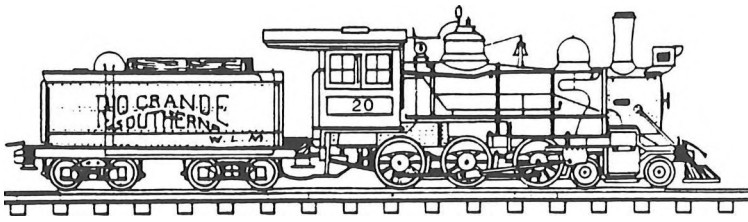
Ed Gerlits / Northwest Loggers Vol. I--Rayonier

John Dillavou / UP System Timetable No. 7
and 2 MoPac Pass. Coupons

Tom Moss / African Violet Basket

Mike Johnson / 1993 RG Ski Train Calendar

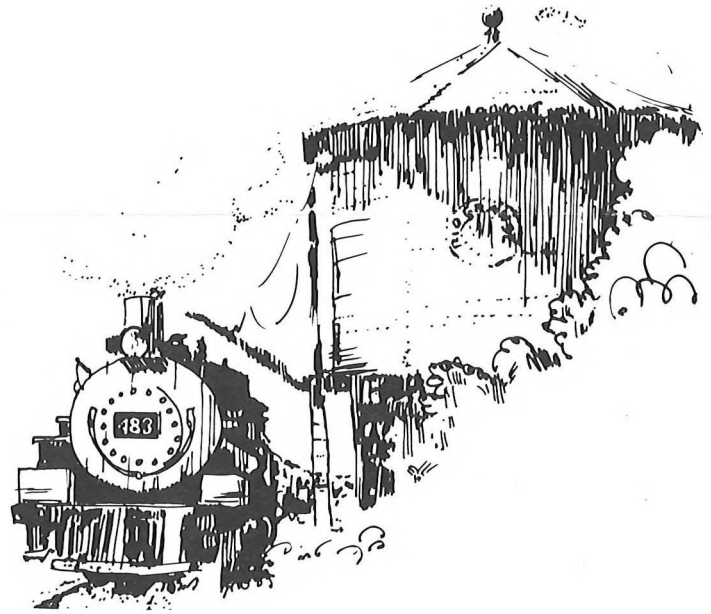
If members have items they wish to donate for the monthly drawings, such as railroad books, pamphlets, timetables, maps, etc., they may contact Roger Callender at his home address, 2573 So. Williams Street, Denver, Colorado 80210, or, phone (303) 722-4733.



2391, Denver, Colorado 80201!! What a nice boost that would be for the Club's foundation (not to mention a \$1,000 for the Club member submitting the winning ticket)

POSSIBLE REVENUE FOR THE CLUB'S HISTORIC FOUNDATION—CLUB MEMBERS: PLEASE NOTE!!!

The Colorado Lottery and News 4, KCNC-TV, are offering Lottery players a chance to turn non-winning Scratch game tickets into big winners for their favorite non-profit organizations and win some cash for themselves. The fourth annual "Everybody Wins" program kicked off recently and will run through February 13, 1993 when a drawing at Villa Italia Mall will result in the top charity winning \$10,000 and the person who submitted the ticket receiving \$1,000. Players must fill out the back of the ticket and designate a non-profit group. The tickets may be deposited into special boxes near Lottery play centers. Information: 759-6867.



If you play the Scratch Game, and do not win anything, why not deposit these tickets as noted, designating the ROCKY MOUNTAIN RAILROAD HISTORICAL FOUNDATION, P. O. Box

ROCKY MOUNTAIN



RAILROAD CLUB

BOX 2391
DENVER, COLORADO 80201

FIRST CLASS MAIL
U. S. Postage
PAID
Denver, Colorado
Permit No. 1873

ERWIN CHAIM
560 EMERSON
DENVER, CO 80218-3208

First Class Mail