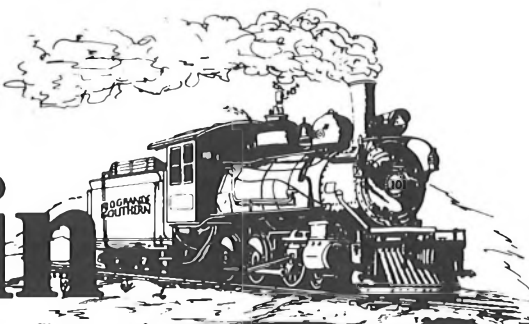


# Rocky Mountain RAIL REPORT



THE ROCKY MOUNTAIN RAILROAD CLUB

---

## MEETING SCHEDULE:

January 12, 1988 -- 7:30 p.m.

Southeast wing of Christ Episcopal Church, 2950 South University at Bates. Off-street parking at rear (east) of meeting hall. Please use the building's south entrance.

Jim Trowbridge..... Editor  
Les Grenz..... Associate Editor  
John Dillavou..... President  
Rich Dais..... Vice President  
Bill Gordon..... Secretary  
Elbert E. Bidwell..... Treasurer

Send all items for publication to: Rocky Mountain Rail Report, c/o Jim Trowbridge, Editor, 502 South Cody Street, Lakewood, Colorado 80226.

COPY DEADLINE -- ALL copy for publication is due no later than the 15th of the month prior to month of publication.

---

## CLUB MEMBERSHIP

Membership in the Rocky Mountain Railroad Club may be obtained by sending \$19.00 (\$15.00 annual dues plus enrollment fee of \$4.00) to: ROCKY MOUNTAIN RAILROAD CLUB, P. O. Box 2391, Denver, Colorado 80201. After April of each year, new members may join for a payment of \$4.00 enrollment fee plus \$1.25 for each month remaining in the calendar year. Dues for the next year are solicited in December of the current year.

January, 1988..... No. 340  
Club Telephone..... (303) 431-4354  
P. O. Box 2391.... Denver, Colorado 80201

CURRENT NEWS AND HISTORICAL NOTES OF ROCKY MOUNTAIN RAILROADING PUBLISHED MONTHLY FOR ITS MEMBERS BY THE ROCKY MOUNTAIN RAILROAD CLUB.

---

## MEMBERSHIP INQUIRIES

Please refer address changes, new memberships and lost newsletters to:

Tom Lawry, Membership Chairman  
c/o Rocky Mountain Railroad Club  
P. O. Box 2391  
Denver, Colorado 80201

## JANUARY 12 PROGRAM

"Super Power En Route to Railfair '81"  
presented by Chris Skow

A 40-minute, color, sound, super-8 movie featuring the Union Pacific steamers 8444 and 3985 and the Southern Pacific's 4449 en route to Railfair '81 in Sacramento, California.

Chris Skow, a resident of Portola, California, has spent over nineteen years as an employee of the Western Pacific and Union Pacific Railroads--the last six as a conductor on the WP, mostly in the Feather River Canyon. In addition, he is the Sales Manager for the Feather River Rail Society, operators of the Portola Railroad Museum, and edits the steam Column for the CTC

## Board Magazine.

Chris also recently took over as tour director for Trains Unlimited Tours of Oroville, California and will be personally conducting five railfan tours to Central and South America in 1988. In his spare time, his hobby is making sound movies of world railroading. He has been presenting these movies to clubs and groups nationwide for some eighteen years.

(Rich Dais)

## **DECEMBER PROGRAM**

From the Club's film archives, those attending the December meeting were treated to a Union Pacific Film entitled "Last of the Giants". Made in 1950's, the 23-minute film represents a classic UP documentary on the 4-8-8-4 "Big Boys" at work.

## **POTPOURRI NIGHT — MARCH PROGRAM**

Please bring fifteen (15) slides of your favorite railroad subject to the January or February meeting so the March program can be set up in slide trays in advance. If possible, please bring your name slide from previous programs. DON'T FORGET-- slides should be in focus and properly exposed. (Rich Dais)

## **ELECTION RESULTS**

In the true tradition of being "railroaded", the slate of officers and board members, as nominated by the nomination committee, was elected at the December meeting. New officers and board members are as follows: John Dillavou, President; Rich Dais, Vice President; Bill Gordon, Treasurer; Bert Bidwell, Treasurer; Joe Priselac, Joe Niklas and Sid White, Board Members. Hold-over Board Members include Mat Anderson, Alan Greene and Bud Lehrer.

## **NEW MEMBERS**

The Rocky Mountain Railroad Club wishes to enthusiastically welcome the following new members:

Bonnie Adams Goleta, CA  
P. A. Gilbert Denver, CO

David Houston Bellaire, TX  
William A. Knous Denver, CO  
Florence A. LaBruzza Denver, CO  
Thomas Parker, Jr. Erie, CO  
Derek Roe Strasburg, CO  
Arthur E. Stensvad North Platte, NE  
Dorothea H. Webber Denver, CO

## **MEMBERSHIP DUES FOR 1988**

1988 Dues Notices went out with the December newsletter. If you haven't renewed your membership as yet, please do so today! Your cooperation will greatly help membership chairman, Tom Lawry and treasurer, Bert Bidwell to do their jobs.

Dues remain \$15.00. As has become our custom, we are having the annual BOOK DRAWING which benefits our equipment fund and provides monies needed to repair and maintain the Club's equipment collection at the Colorado Railroad Museum.

This year, the main prizes include: 1st prize--Wm. Henry Jackson's Railroad Album; 2nd prize--Memorial Edition, Denver, South Park & Pacific by M. C. Poor (RMRRRC Publication); 3rd prize--Pictorial Supplement to Denver, South Park & Pacific, Abridged Edition by R. H. Kindig, E. J. Haley and M. C. Poor (Trowbridge Press Publication); plus other prizes yet to be determined.

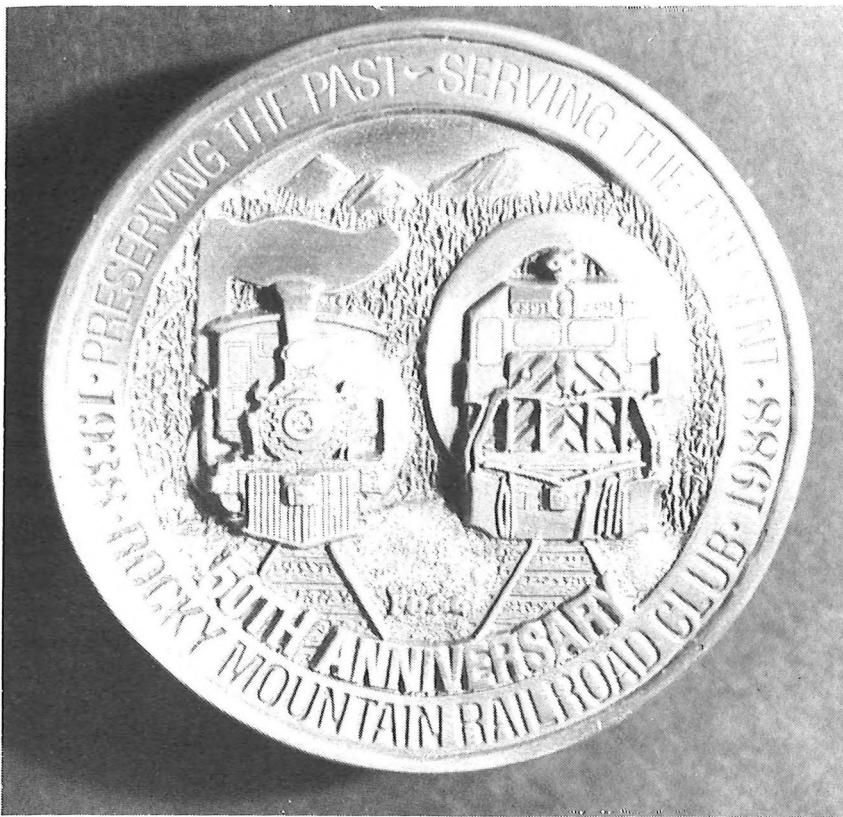
Chances on the Book Drawing are \$2.00 each and you may purchase and enter as many chances as you wish. We include a copy of the drawing coupon for your use. Please be sure to fill out the coupon with complete information. You may make additional copies if you desire to send in more than one chance, but, please fill out a coupon for each chance you desire!!!

-----  
ROCKY MOUNTAIN RAILROAD CLUB  
1988 Book Drawing - April 16, 1988

NAME \_\_\_\_\_

ADDRESS \_\_\_\_\_

-----  
*Please Print or Type. Winners need not be present to win.*  
-----



## 50th ANNIVERSARY BELT BUCKLE

ORDER FORM--BUCKLE

The Club has commissioned a commemorative belt buckle using the 50th Anniversary Logo. The buckles are in stock now and we have already sold 150 since the December meeting. There is only a limited quantity (350) available, so, get your order in today! Orders may be sent to:

ROCKY MOUNTAIN RAILROAD CLUB  
c/o Erwin Chaim  
560 Emerson St.  
Denver, Colorado 80218

NAME \_\_\_\_\_

ADDRESS \_\_\_\_\_

Please send \_\_\_\_\_ buckles @ \$10.00 each

(\$8.00 plus \$2.00 1st class postage). I

enclose \$ \_\_\_\_\_ in check or money order.

### THE FIRST STEP

Preparation work for the demolition of the old Railway Express Agency section of Denver Union Station has begun. It is located on the northeast end of the building. This is evidently the first phase of what will eventually be the removal of Amtrak from the depot and the construction of new structures behind and on either side of the building as it is converted to other uses. Denver's Mayor and the city have indicated no interest in seeing the depot retained for transportation purposes and the building's owners wish to generate revenue from their property. (Darrell Arndt)

### ANNUAL NEAL MILLER PHOTOGRAPH

For as many years as your editor can remember, Neal has been handing out printed copies of some spectacular photograph at the December meeting. It seemed unfair that non-Denver members never received a copy or even saw the photo. To rectify this, we started to reprint the photo in the Rail Report a few years ago. This year, we again present Neal's gift to all members via the above photograph. Our thanks to Neal.



U. P. 3713 & 4004, Buford, Wyoming, May 17, 1958

Neal R. Miller

## NEWS ON THE DURANGO & SILVERTON NG RAILROAD

Don Stott relates the following information about the D&SNG RR:

Recent work included new rails and ties and grade change at 6th street in Durango as well as repairs to crossing signals at Trimble Lane. 6,000 tons of ballast were installed between mile posts 492-496, while sharp curves and 3½% grade have been removed at MP 488. Two new passenger diesel cars will be built around used mine locomotives with diesel engines. A capacity of 100 is desired to haul backpackers to MP 483.4 (Chicago Basin) and other letoff

points. Negotiations are in process with Tamarron regarding a spur from Rockwood with establishment of special trains. The Telluride Iron Works is building another new tender. The fares on the Silverton have been raised by \$5.00 and 1988 season brochures have already been printed. And, lastly, "Ah Wilderness" has been purchased by Tall Timbers. (Don Stott)





### **RMRRC 50th ANNIVERSARY COMMEMORATIVE PLATE**

The 50th Anniversary Committee has, with the permission of the Board, commissioned a commemorative Anniversary Plate to be produced. The 50th Anniversary is in blue with gold edging and "50th" lettering on a cream-colored 9 3/4" plate. (Due to the special gold inlay, this is intended to be a decorative, rather than a utility piece) An order for 120 plates has been placed with an expected delivery date of February/

March, 1988, just in time to celebrate the 50th Anniversary in April.

The cost of this plate is \$24.95 and includes postage and special mailing box. Orders may be sent to:

COMMEMORATIVE PLATE  
Rocky Mountain Railroad Club  
c/o Cyndi Trombly  
4261 So. Richfield Way  
Aurora, Colorado 80013

COMMEMORATIVE PLATE ORDER FORM

NAME \_\_\_\_\_

ADDRESS \_\_\_\_\_  
\_\_\_\_\_

Please send \_\_\_\_\_ plates @ \$24.95 each. I  
enclose \$ \_\_\_\_\_ in check or money  
order.



**PRIVATE CAR "UTAH" SUFFERS  
FIRE DAMAGE**

Only hours after being open for inspection in conjunction with the new Rio Grande Ski Train promotion on December 10th, a fire heavily damaged the private railroad car UTAH at Denver Union Station. It was not known how long the fire burned before smoke was seen coming from the car at daybreak, but it is thought several hours would not be an unreasonable estimate. Caused by an electrical short, the actual fire was confined to the bar area on one end of the car, but the entire interior of the lounge car suffered heavy smoke damage. It appeared as if someone sprayed the inside with black paint. It is evident that the car would have been completely destroyed had it not been for the fact that when the car's interior was rebuilt from its Casablanca Fan Company configuration in 1985 that the fabrics, paints, varnishes, carpets, etc. used in the renovation were made of fire resistant materials or had been treated to retard combustion. Review of the damage to determine what repairs are needed began after the car was moved to the Denver Railway Car Company shops. The tragedy was certainly felt by the car's owner Philip Anschutz and his staff who put so much time, effort and money into the first class renovation of the car and for which they were justifiably proud. (Darrell Arndt)

**RMRRRC 50th ANNIVERSARY CALENDAR**

1988 is here!!! Have you ordered your 1988 RMRRRC 50th Anniversary calendar? It's a very special commemorative souvenir of this special occasion. The 50th Anniversary calendar depicts memorable excursions on Colorado, South Dakota, New Mexico and Wyoming rail trips as recorded by seventeen separate Club members.

Over twenty-six black and white photographs on a large 14"x22" opened format capture a wide variety of passenger train operations undertaken over the years and include such operations as the Black Hills Central, Colorado & Southern, Denver & Intermountain, Denver & Rio Grande Western (both standard and narrow gauges), Great Western, Manitou & Pike's Peak (steam), Midland Terminal, Rio Grande Southern (steam and Galloping Goose) and the Union Pacific.

Cost of this calendar is just \$6.00 each, plus \$1.50 each for 1st class postage. You may obtain copies at regular Club meetings also. Since our December meeting, almost half of the 1000 calendars have been sold, so, don't delay. Get your copy today!

Proceeds from the sales of this calendar will benefit the Club's archives and equipment collections.

CALENDAR ORDER FORM

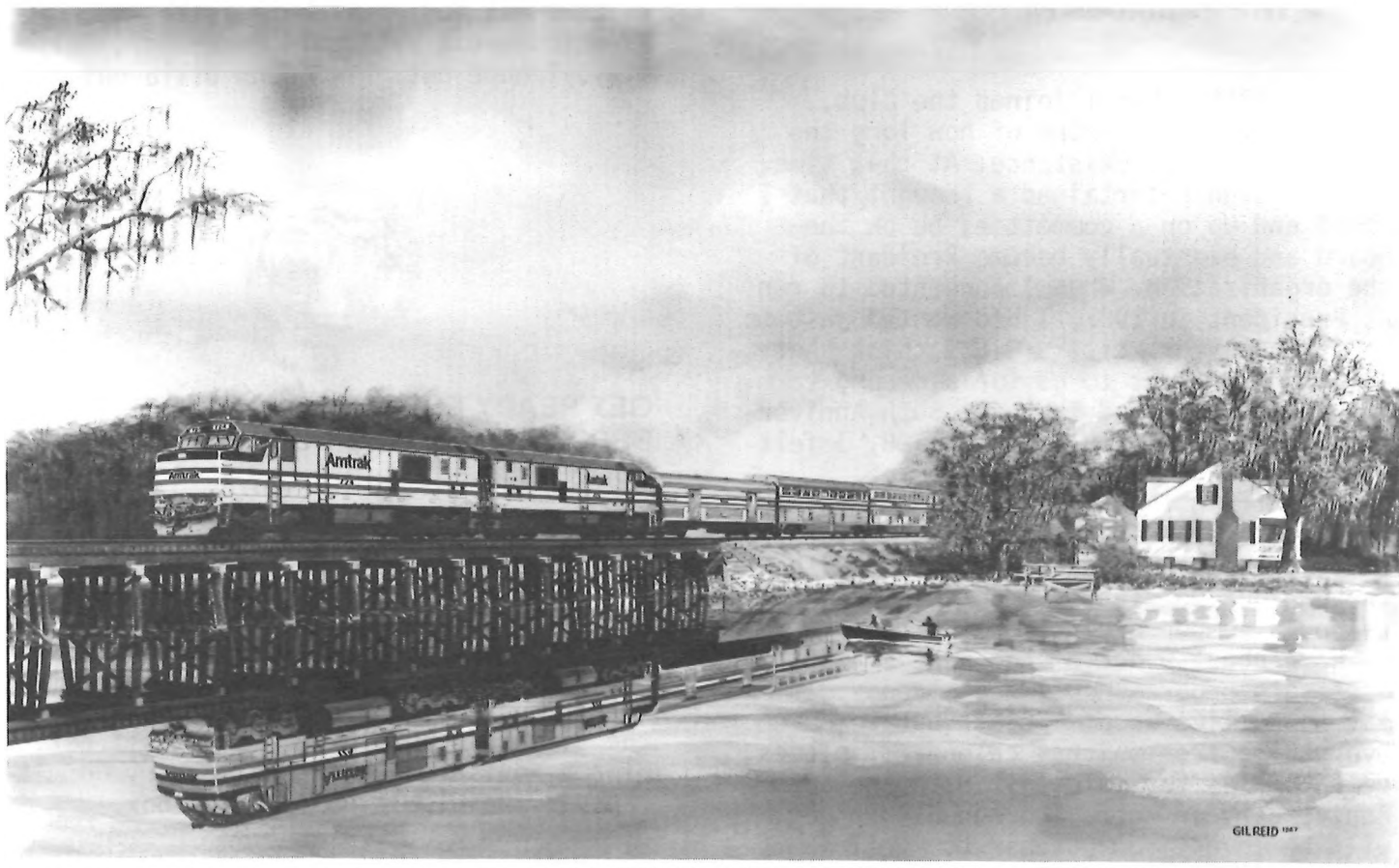
NAME \_\_\_\_\_

ADDRESS \_\_\_\_\_  
\_\_\_\_\_

Enclosed is a check or money order in the amount of \$ \_\_\_\_\_ for \_\_\_\_\_ copies of the RMRRRC 50th Anniversary calendar.

Send your orders to:

CALENDAR  
Rocky Mountain Railroad Club  
P. O. Box 2391  
Denver, Colorado 80201



## 1988 AMTRAK CALENDAR

Amtrak's year-at-a-glance wall calendar for 1988 features an original oil painting of the "Sunset Limited" in Louisiana's bayou country. Noted railroad artist Gil Reid, who also produced the paintings for 16 previous Amtrak calendars, captured Amtrak's Superliner-equipped train and its reflection as it crosses a bridge over Bayou Ramos, en route from New Orleans to Los Angeles.

The calendar may be ordered by sending a check payable to: Amtrak Calendar, P. O. Box 7717, Dept. S, Itasca, Illinois 60143. Prices are \$5 for one, \$9 for two, \$12 for three, and \$14 for four. For information about further reductions for bulk purchases or previous calendars from 1980-86, contact Barbara Clemons at Western Folder Distribution Co., (312) 773-3377. Allow two weeks for delivery.

## THE NEW SKI TRAIN — READY TO ROLL

An open house for invited guests to unveil the new ski train was held on the evening of December 10th at Denver Union Station. On display was 66-seat coach No. 433, 38-seat parlor car No. 426 and 80-seat coach No. 44, all resplendent in their new Rio Grande paint scheme. Inside the depot, live music and food was enjoyed by the many people in attendance as the virtues of the new train were highlighted by speakers from the AnSCO Investment Corporation, Gart Brothers Sporting Goods, Adolph Coors Co. and the Winter Park Ski Area. Garts, Coors and the Winter Park Ski Area will participate in promotional activities to publicize the train. First trip was to be on January the 2nd. A Rocky Mountain Railroad Club excursion at the end of March with a chartered car on the new train is now in the planning stages. Stay tuned for details in the next Rocky Mountain Rail Report.

(Darrell T. Arndt)

## FROM THE PRESIDENT

Back in 1962, when I joined the Club, little did I ever think of how long the Club had been in existence. At that time, I never even entertained a thought that I would end up on a committee, be on the Board and eventually become President of the organization. When I consented to run as President in 1987, I had wanted just to be for one year. Little did I think that I would even want to go for a second term but when I realized that the 50th Anniversary of the Club would be in 1988, I felt it would be an honor to do the job.

We, as Officers and Board Members of the Club, have worked many hours along with the various Committee Members to present to you a number of interesting trips and we have about 9 out of the next 12 monthly meeting's programs outlined already. It may sound like a commercial, but we have everything from shirts, calendars, plates, belt buckles for sale, all with the 50th Anniversary on them. The annual banquet will be moved from October to April in 1988 because it was in April, 1938, that the first meeting was held.

We will need many people in 1988 to help on the committees and programs and trips. I have already had several people volunteer to assist the various chairmen and chairwomen of the committees that we have for 1988. We will need even more because we need to make 1988 a special year for all of us. We have to face the facts that we can not take the trips we once took because they can no longer offer them to us. We have to find new and different and unusual things for the Club to do. The short field trips and hikes seem to grow in attendance each year. We have to find things for the members and others who join us as guests that will fit all pocketbooks, not just a few.

I doubt if the founders of this Club had any idea as to how large it would grow. None of us wanted it to probably become big business but it has. The paperwork and time that has to be spent on these projects and meetings astound even me in the world of government red tape. Even with all the volunteer help, it makes you wonder by the

time we hit our 75th anniversary, will we have to have a paid office manager. Personally, I hope not. (John Dillavou)



## GET READY FOR THE RMRRC'S SPECTACULAR WEEK OF "RAILROADIN" JUNE, 1988

We will not be covering any specific part of the two week extravaganza this month, but wish to make note of the fact that the trip brochure was sent to all members and other requests during the week of December 14th. You should have received yours by the time this newsletter is out. If not, please advise the 50th Anniversary Committee via the Club's post office box.

The following schedule is provided for your convenience. You may want to make a copy or cut this out of the newsletter to carry in your wallet for quick, easy reference:

SATURDAY, June 18 -- Union Pacific 3985

SUNDAY, June 19 -- Georgetown Loop RR

MONDAY, June 20 -- Pike's Peak Cog Ry.

TUESDAY, June 21 -- Cripple Creek trip, including CC&Victor NG RR

(or) Cadillac & Lake City RR

WEDNESDAY, June 22 -- travel to Chama

THURSDAY, June 23 -- Cumbres & Toltec Scenic RR Excursion

FRIDAY, June 24 -- travel to Durango (field trip available to retrace Rio Grande NG route from Chama to Durango)

SATURDAY, June 25 -- Durango & Silverton Narrow Gauge RR

SUNDAY, June 26 through SATURDAY, July 2 -- Field trips ranging from the Rio Grande Southern to Marshall Pass to Alpine Tunnel on the Denver, South Park & Pacific.





## BOOK REVIEWS

COLORADO & SOUTHERN--A Personal Memory of the Standard Gauge by Ross B. Grenard. Published by Andover Junction Publications, Box 1160, Andover, N.J. 07821. \$12.95, soft cover, 65-pages.

Fellow Club member, Ross Grenard, is no newcomer to anyone interested in trains and photographs of same. Ross's latest endeavor is a concise portrait of the C&S standard gauge as he fondly remembers it. This is not a history, but a compilation of more-or-less favorite shots that cover the front range and activity on the C&S, including unique locomotives and trains in action. Captions go beyond mere dates and places and tell a story about the railroad and its people.

While your editor is more inclined to the narrow gauges, I enjoyed this volume and recommend its purchase to anyone who enjoys trains.

## SILVERTON STREET RAILWAY COMPANY

Club member, Don Stott, advises us that he has established the above railway company. Don states that the corporation has been formed, a barn building purchased, all surveying and engineering completed, 65# rail obtained, fare boxes bought and first car under construction. The route will be 1.3 miles long and run via Reese Street, 14th Street, Blair Street and 7th Street, Silverton. The railway meets all D&SNG RR trains, costs 50¢ and has a running time estimated at 8 minutes. He foresees having 5 cars eventually--2 by next summer. The railway is 3'-gauge, 600vDC, 2-0 Overhead, poles 100' apart. Silver passes are being sold as per Swap 'N Shop (1000 total with 50 already gone) (Don Stott, President)

## SWAP 'N SHOP

Personal ads are accepted from members for items to be listed for SALE or TRADE or WANTED. We cannot enter into any correspondence, nor will we appraise them.

WANTED: Would like to purchase the following Union Pacific Railroad items:

- 1) Lanterns, badges, public timetables prior to 1900.
- 2) Color negatives and/or slides of Big Boys, Challengers, Northerns, UPRR Streamliner passenger trains.
- 3) Color 8mm movies of UP steam power.

Lloyd E. Neal, Jr., 10 Morrison Place, West Somerville, MA 02144.

WANTED: Information about the theft of 90 railroad switch keys, framed and mounted under glass. Stolen November 12th from Club member A. F. von Blon, 1699 Ewing Ave., Waco, TX 76707. A reward is offered for the return of the collection.

FOR SALE: Solid Silver (2oz.), numbered, engraved with owner's name, lifetime passes to the Silverton Street Railway Co. \$139.00. Don Stott, Box 780, Silverton, CO 81433. (303) 259-2884.

FOR SALE: Otto Mears filigree silver pass on the Silverton and Rio Grande Southern Railroads. Issued to Mrs. J. W. Gilluby & Family (this is No. 4) J. W. Gilluby was the Treasurer of the Denver & Rio Grande RR. Best offer over \$4,000.00. Richard A. Ronzio, P. O. Box 344, Golden, CO 80402. (303)279-1507.

## A DEPOT DECORATION

In a departure from recent tradition, a new approach was taken this year for adding a touch of the holidays to Denver Union Station by the Intermountain Chapter of the NRHS and the ROCKY MOUNTAIN RAILROAD CLUB. A desire existed by the two groups and the Denver Union Terminal Company to eliminate the logistical challenge of obtaining a large tree, erecting, decorating and maintaining it and the eventual removal process. So, instead of a large, live tree for the waiting room, 20 small, green, artificial trees were purchased by the two organizations, placed on the top of the benches and decorated with ornaments and

lights. These new materials are easier to use, can be stored for future use and will perhaps be enhanced with additional items in future years. If you are in the neighborhood, be sure to stop by and see the results of our efforts--we think the effect is quite nice! (Darrell T. Arndt)

### MISCELLANEOUS

#### RIO GRANDE'S BID FOR SOUTHERN PACIFIC UPDATED

Denver & Rio Grande Western Railroad may finish second in the \$1.8 billion bidding war for Southern Pacific Railroad. Inside sources confirmed that Kansas City Southern currently has the inside track. However, Denver billionaire Philip F. Anschutz, owner of the Rio Grande, has offered to meet any competing bid. But Southern Pacific Santa Fe Corporation is said to favor the Kansas City Southern because it would offer less competition than Rio Grande to AT&SF on key transcontinental routes.

Based on a public interest decision, the Rio Grande believes that only Rio Grande's offer does what needs to be done and will have the best chance to pass the ICC's criteria for takeover. A decision is expected before the end of the year by SFSP.

Both Kansas City Southern and Rio Grande are dwarfed by Southern Pacific, which owns and operates 13,000 miles of track compared to 1,700 for Kansas City Southern and about 1,800 for Rio Grande.

#### SANTA FE LAYOFFS/TRANSFERS HIT LA JUNTA, COLORADO

La Junta has been a railroad town since 1876 when the Santa Fe rolled into town under the name of Pueblo and Arkansas Valley Railroad. The town's economy has revolved around the railroad ever since! Eighteen workers lost their jobs last week and another 60 are being transferred to regional AT&SF headquarters in Albuquerque. While 214 workers are expected to be kept in the railyards and at the Amtrak passenger terminal, townfolk and railroad officials fear there may be more cutbacks.

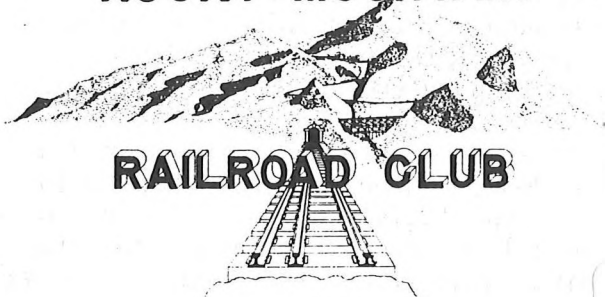
#### PUEBLO'S UNION STATION GOES TO AUCTION

Club member Albert Knickebine (of Pueblo) sent a clipping from the December 10th Pueblo Chieftan which mentions the plight of the Union Station. It was supposed to be turned into an upscale commercial center. The developer, as happens so often, took out loans and made big statements about redevelopment, but never started any work--other than to move all tenants out of the building.

#### ANOTHER 50TH ANNIVERSARY CELEBRATION

Our congratulations to Ed and Wan Haley on the celebration of their 50th Wedding Anniversary. We wish to take this opportunity to thank Ed for his many years of service to the Club and Wan for letting him do so.

## ROCKY MOUNTAIN



BOX 2391  
DENVER, COLORADO 80201

FIRST CLASS MAIL  
U. S. Postage  
PAID  
Denver, Colorado  
Permit No. 1873

BRYAN BECHTOLD  
940 E. 8TH AVE., #9  
DENVER, CO 80218

**First Class Mail**