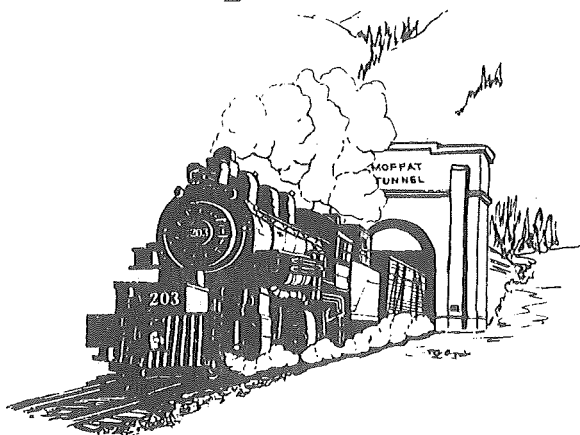


Rocky Mountain Rail Report



The Rocky Mountain Railroad Club

P. O. Box 2391 Denver, Colorado 80201
September, 1979 No. 240

CURRENT NEWS AND HISTORICAL NOTES OF
ROCKY MOUNTAIN RAILROADING PUBLISHED
MONTHLY FOR ITS MEMBERS BY THE ROCKY
MOUNTAIN RAILROAD CLUB

Editor - - - Darrell T. Arndt

MEETING NOTICE: Date . . . Tuesday, September 11, 1979
 Time . . . 7:45 P.M.
 Place . . Southeast wing of Christ Episcopal Church, 2900 So.
 University at Bates; off-street parking at rear (east)
 of meeting hall. Please use building's south entrance.

PROGRAM NOTES:

The program for the September meeting will consist of a selection of the Rocky Mountain Railroad Club's 16mm movies from the Otto Perry collection. Taken between 1945 and 1964, this selection primarily shows steam engines, but a number of diesels and a few electrics are also included. Railroads shown will include Burlington, Rock Island, Santa Fe, Denver & Inter-Mountain, Rio Grande (both narrow and standard gauge), Rio Grande Southern (including some neat shots of the No. 20), and Union Pacific. As usual, Ed Haley will man the projector, and Dick Kindig will provide the commentary.

* * * * *

Mel McFarland's narrated slide program of an imaginary trip over the Colorado Midland was akin to stepping into a time machine at the August meeting. We received trackside, mountainside, trainside, and birdseye views of the Colorado Midland from its very beginning in Colorado Springs to its farthest advance, west of New Castle. Not only did we see the past, but occasional "now and then" photos depicted how Colorado and the route of the Midland has changed over the years. Our thanks to Mel for a very entertaining program and for coming up from Colorado Springs to share it with us.

* * * * *

THE CLUB'S ANNUAL BANQUET will be held on October 6 this year. The flyer included with last month's newsletter gave details with an order blank. Tickets are \$13.50 each, please designate preference of beef or chicken dinner. Advance reservations required. The program, "Emperor of the North" is an excellent railroad movie filmed in the Pacific Northwest. Those who would like to contribute door prizes for the banquet, please contact Jim Trowbridge.

THE BOREAS PASS - COMO FIELD TRIP on August 18, provided an opportunity to explore a portion of the old DSP&P right-of-way, learn a bit of Colorado rail history, and take in some great scenery all at the same time. The group started on the grade in Breckenridge as planned, making occasional stops enroute over the pass at various points of interest. Ed Haley's commentary at each stop helped us visualize what the rail and mining operations were like on the pass years ago. Lunch at Baker's Tank was quite pleasant, and the summit of Boreas Pass was another highlight. Although it was the middle of August, Mother Nature was already trying her hand at snow-making, fresh traces of which could be seen on some mountaintops. Ominous looking clouds in the distance were present throughout the day, but they held off until arrival in Como. Then it was like standing under the spout of a giant water tank. The deluge prevented planned tours of the Como yards while half the group ate dinner in the Como Eating House, unfortunately, but shelter was available in the old schoolhouse. When everyone completed supper, Ed Haley gave a memorable program on riding the Denver-Breckenridge passenger train.

It was a good feeling to see the Como Hotel and Eating House back in business after all these years. Although only in business for a short time, and not really set up for a "group attack" like the one the club dropped on the new proprietors after an already busy day, Keith Hodges and his wife left the same good impression with us that they have been with individual diners. If your travels take you through Como at either breakfast, lunch or supper time, consider stopping in and trying out the "Como Depot Restaurant." Their prime rib seems to be developing a reputation all by itself.

* * * * *

THE VIRGINIA DALE FIELD TRIP turned out to be a very interesting expedition with a turn out of members that probably broke all club attendance records for a function of that type. Restoration work on the Ft. Collins Birney was intriguing and quite impressive. The Virginia Dale Stage Station was open for inspection and exploring the various sections of the DL&NW grading was fun, especially after "discovering" some artifacts, foundations and stone work constructed by grading crews. Riding the Buckhorn Northern provided a perfect way to conclude the day.

* * * * *

8444 LOST AND FOUND DEPARTMENT - LOST: A roll of Super 8 movie film in a cartridge marked "#11" in red, that was shot near the end of the club's 8444 excursion. Please contact George Deak, 1417 Olive Road, Homewood, Illinois 60430. FOUND: After trip, a near new railroad cap, size 7½, with NMRA emblem on it, discovered along 17th Street. Contact Les Nelson, C/O Colorado Conveyor Company, Inc., 11575 W. 13th Avenue, Denver, CO 80215. Phone: 238-6388.

* * * * *

THE DENVER DIVISION OF THE NATIONAL MODEL RAILROAD ASSOCIATION will sponsor a Taco Bust at Heritage Square near Golden on September 16. Unlimited train rides, unlimited food (tacos, beans, beer and soda) and door prizes are on the agenda. Fare is \$4.50 for adults, \$3.50 for children under 12, or \$12.00/family. Food serving starts at noon. For pre-registration, contact Tom Fitzgerald, 15531 E. Pacific Place, Aurora, Colorado 80013.

* * * * *

We're Blowin' Our Eastbound Whistle 1/2 Hour Later.



Rio Grande

Beginning August 3rd, the Rio Grande Zephyr eastbound trains, from Salt Lake to Denver, leave 1/2 hour later. Our westbound schedule remains the same. Hop on America's favorite train ride. Relax and enjoy the most spectacular scenery in the Rockies. Catch the Rio Grande.

No. 18 Eastbound Tuesday Friday Sunday Read Down	Rio Grande Zephyr Tri - Weekly Effective Aug. 3, 1979 (Mountain Time)	No. 17 Westbound Monday Thursday Saturday Read Up
6:30 AM	Lv. Ogden, Utah	Ar. 10:30 PM
7:20 AM	Ar. Salt Lake City	Lv. 9:40 PM
7:30 AM	Lv. Salt Lake City	Ar. 9:30 PM
8:20 AM	Lv. Provo	Lv. 8:25 PM
10:30 AM	Lv. Helper	Lv. 6:20 PM
11:45 AM	Lv. Green River	Lv. 4:55 PM
12:10 PM	Lv. Thompson, Utah	Lv. 4:30 PM
1:40 PM	Ar. Grand Junction	Lv. 3:10 PM
1:55 PM	Lv. Grand Junction	Ar. 2:55 PM
3:05 PM	Lv. Rifle	Lv. 1:40 PM
3:40 PM	Lv. Glenwood Springs	Lv. 1:10 PM
5:20 PM	Lv. Bond	Lv. 11:30 PM
6:50 PM	Lv. Granby	Lv. 9:55 PM
9:30 PM	Ar. Denver, Colo.	Lv. 7:30 AM

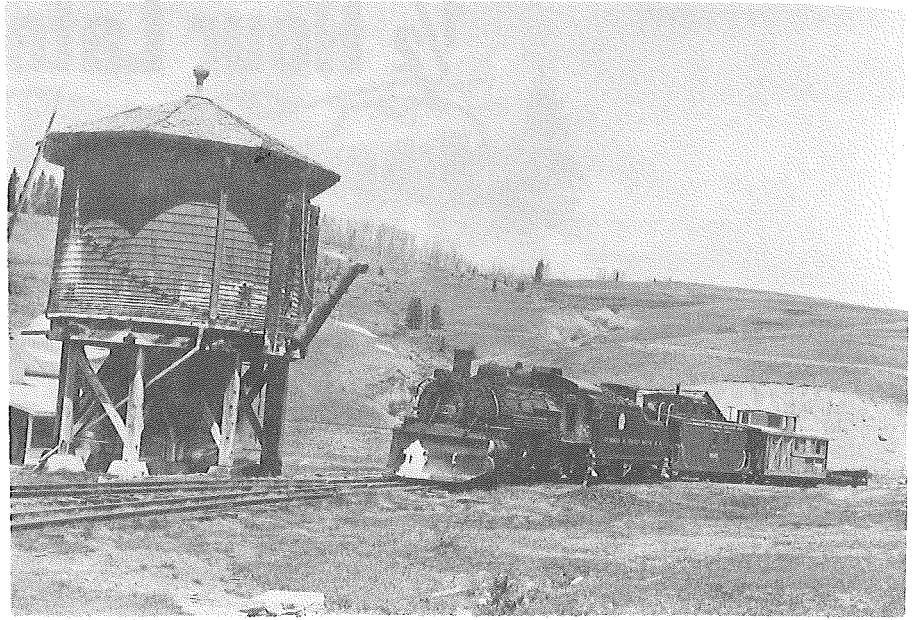
For reservations and more information on riding the train, call: 629-5533

SINCE WE DIDN'T THINK YOU'D BELIEVE IT if we just told you the D&RGW recently ran an ad in Denver newspapers, on the Rio Grande Zephyr, we thought we'd reproduce it here at the same size. A resort near Aspen also advertised leaving the automobile at home and taking the train to Glenwood Springs, where their van would meet you. It was accompanied by a rather awful picture of the RGZ in the Shoshone Tunnel in Glenwood Canyon, with most of the train obscured by trees, the tunnel, dam facilities, and the edge of the photo. But at least, they have the right idea.

Business on the RGZ has been heavy all summer, and into the fall it is flat sold out months in advance; even mid-week runs filled to capacity on occasion. Business is picking up on the Salt Lake City end as well.

Sometime later this year, the railroad intends to file for a fare increase; one hasn't been requested for a number of years. Also, they will begin accepting Bank Americard and Master Charge for ticket purchases.

* * * * *



With the beginning of regular passenger service just days away, the Cumbres & Toltec Scenic Railway sent out a work train to clear rocks and debris from the right-of-way and remove the few remaining snowdrifts from last winter. George Lawrence took these photos on June 6. The water tank is at Osier.

* * * * *

COLORADO'S LONELIEST RAILROAD - Why would anyone want to write a history of a Colorado railroad that was only 31 miles long, and built on practically level ground? Because the San Luis Railroad was a simple, yet remarkable railroad, as were its successors. It never owned more than four locomotives and 20 cars at any one time, yet it managed to survive financial crisis after financial crisis to reach the age of 67 in solvent condition.

The checkerboard past of this little railway is a unique story, centered around a group of people as varied as life itself. Available late fall of 1979, COLORADO'S LONELIEST RAILROAD, by Bob Griswold, traces the beginnings of the San Luis Southern in 1909, to its present operation as the Southern San Luis Valley Railroad. 8½ x 11, 150 pages with photos. Price for the hardcover book is to be announced, published by Pruett Publishing Company in Boulder.

* * * * *

THE CLUB HAS LOST an avid Colorado rail enthusiast and long-time member. Lester Sherwood of Stillwater, Oklahoma, passed away on August 4, at the age of 68, after a brief illness. Lester journeyed to Colorado many times to take in trips and explore old grades. He owned the Sherwood Lumber Company in Stillwater at the time of his death.

* * * * *

THE OLD FT. LUPTON DEPOT that had been moved to a planned narrow gauge rail operation east of that town several years ago, tragically burned to the ground this summer, when a weed fire got too close to the structure.

* * * * *

IT'S HERE, IT'S GONE, IT'S HERE - The ex-Seaboard Coast Line diesel #501, that was reported last month as being prepared to leave Denver, never made it past the UP yards. Apparent mechanical problems were encountered on the unit.

* * * * *

COSTLY CRUNCH - That Union Pacific wreck west of Cheyenne on Sept. 30, turned out to be one of the railroad's more expensive mishaps, pegged at an estimated cost of \$4.5 million. An obstruction in the brake line near the front of the train resulted in the freight taking the 45 mph curve too fast, and piling up all 80 cars of soda ash under the I-80 bridges, damaging bridge supports, and forcing closure of the road and rail line. Incredibly, no one was hurt.

* * * * *

STEAM & THUNDER IN THE TIMBER - Rocky Mountain Railroad Club member, Mike Koch, of Scarsdale, New York, has written another great book on the logging railroads of the United States and Canada. Mike is well remembered for his book on the Shay locomotive, SHAY: TITAN OF THE TIMBER, published in 1971, and already a collectors' item. His new book is edited by Ed Haley, and published by World Press of Denver, and is presently being bound at Mountain States Bindery in Salt Lake City. Finished books are expected by the end of September. Printed on 70-pound enameled stock, in 8½ x 11 inch size, the book contains 560 pages, 925 black & white photographs, 12 beautiful full-color paintings, and 21 handsome drawings by Richard Ward. World Press, Inc., 1215 Elati Street, Denver, Colorado, 80204, will mail a brochure describing the book upon request, or it may presently be ordered from World Press for \$29.00 per copy. At the time the binding work is completed, the price will be raised to \$35.00 per copy.

* * * * *

EX-GREAT WESTERN STEAM LOCOMOTIVE NO. 75 is not letting rust build up on its drivers. Having just returned from Wallace, Idaho and Glacier National Park, where filming for "Heaven's Gate" took place, the engine is now being prepared to leave Denver on September 5, for Georgia and more filming for an MGM movie. As was done on the recent trip up north, the locomotive will be moved on a flat car, while the car "Moloy Brown" will follow in a freight.

* * * * *

BAD NEWS - The financially troubled White Pass & Yukon narrow gauge railroad has indicated its intentions of discontinuing passenger service on its 111 mile line between Skagway, Alaska and Whitehorse, Yukon. Adding to the carrier's problems, is the recent opening of the Skagway-Whitehorse portion of the Klondike Highway, which parallels the railroad. Before the highway, it was necessary to travel by railroad to the interior of the country, putting your vehicle on the train if you had one with you. Should your future travels include the territory between Skagway and Whitehorse, be sure your travel agent understands that the routing should include this fantastic railroad trip, if he doesn't want his arm broken!

* * * * *

SWAP 'N SHOP - Personal ads are accepted from members for items to be listed for sale or trade or wanted. We cannot enter into any correspondence, nor will we appraise items. Ads are run on a space-available basis.

FOR SALE: 140 railroad books and publications from a Western Americana Library plus timetables and other bits of railroad memorabilia. If interested, send stamped, addressed envelope to the address below. A list of materials available will be furnished.

HAZEL L. COVEY, 481 S. Balsam Street, Lakewood, CO 80226

WANTED: Looking for mint condition copy of PICTORIAL SUPPLEMENT TO DENVER SOUTH PARK & PACIFIC. State price.
MIKE HIPSKIND, 1100 Tassie Lane, Cincinnati, Ohio 45231

WANTED: Copy of Morris Cafky's COLORADO MIDLAND
FRANK H WINTERING, 4222 Patricia Way, Dunsmuir, Calif. 96025

WANTED: Prints or slides of Milwaukee Road F units in orange and maroon, in service on the UP streamliners in late 1955 or early 1956.
PAUL R. McDONALD, 412 Bourland, Waterloo, Iowa 50702

FOR TRADE: Will trade Colorado Centennial plates for your state.
F. B. RIZZARI, 1716 Viewpoint Road, Lakewood, Colorado 80215

FOR SALE: OFFICIAL RAILWAY EQUIPMENT REGISTER, Vol. LXXV. No. 1, July, 1969. 1,196 pages. This is a quarterly of U.S., Canadian & Mexican railroads, showing car numbers, capacity, etc. Also, UNIFORM FREIGHT CLASSIFICATION NO. 9, 929 pages. Ratings, rules & regulations on freight tariffs. Soft-bound, 8" x 11", weight approx. 6 lbs. VERY GOOD condition. Ship U.P.S., Prepaid \$17.50.
EVERETT SWAN, 1115 NW 41st, Oklahoma City, Okla. 73118

FOR SALE OR TRADE: Have tall globe Adlake Reliable hand lantern, embossed H&TC RR, globe etched H&TC. This is missing oil font. Locomotive Dictionary 1919, Kook, Shay Locomotive, books by Abdill, Beebe, Kratville, Reid & Stauffer. Ry & Loco. Hist. Soc. bulletins #44 - #100, less No's. 63, 75, 94. Will sell or trade books in good condition.
A. F. VON BLON, 1111 Colcord, Waco, Texas 76707

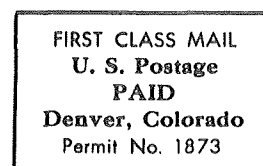
* * * * *

ED GERLITS, President

BILL GORDON, Secretary

ERWIN CHAIM, Vice-President

ARDIE SCHOENINGER, Treasurer



FIRST CLASS MAIL