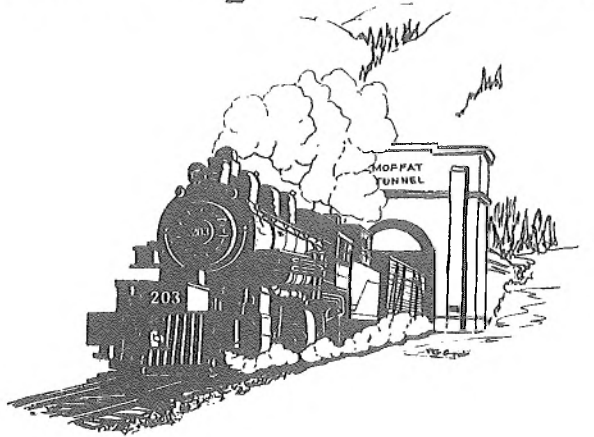


Rocky Mountain Rail Report



The Rocky Mountain Railroad Club

P.O. Box 2391 Denver, Colorado 80201
February, 1978 No. 221

CURRENT NEWS AND HISTORICAL NOTES OF
ROCKY MOUNTAIN RAILROADING PUBLISHED
MONTHLY FOR ITS MEMBERS BY THE ROCKY
MOUNTAIN RAILROAD CLUB

Editor - - - Darrell T. Arndt

MEETING NOTICE: Date . . . Tuesday, February 14, 1978
Time . . . 7:45 P.M.
Place . . . Southeast wing of Christ Episcopal Church, 2900 So.
University at Bates; off-street parking at rear (east)
of meeting hall. Please use the west doors to enter
the hall while construction is in progress.

PROGRAM NOTES: POTPOURRI NIGHT

It's that time of the year again, when we all get a chance to show a few of our slides to fellow members and friends as we have another "Potpourri Night," in place of a regular program. Each individual is invited to bring 20 slides or less, to be shown on the Club's stack loader projector. To have your pictures shown in the correct order, your slides should be arranged as follows: First slide should be put on the bottom with the white or blank side up; second on top of the first, also with white or blank side, continuing on through all of the slides in this manner, ending up with the last slide on top. This way, the projector will show the pictures in correct order. Check when finished stacking, to see if all right sides are up. Choose your own subject matter, but try to keep it in the realm of railroading, of course, and be sure to give a brief description of each slide. Please remember to limit your selection to around 20 slides, as we want to be able to see everyone's contribution. Remember, everyone is invited to join in the fun.

* * * * *

OTTO PERRY MOVIES are never a disappointment, and January's showing by Dick Kindig and Ed Haley were no exception. Scenes included Rocky Mountain Railroad Club specials on the Farmington Branch, the Rio Grande Southern, and over Poncha Pass into the San Luis Valley. Other sequences were taken riding the "San Juan" between Alamosa and Durango. Closer to town, we saw steam and diesel action on various lines radiating from Denver, plus local street-car activity. Santa Fe trains negotiating Raton Pass were quite interesting, as were the many other views shown that are too numerous to mention.

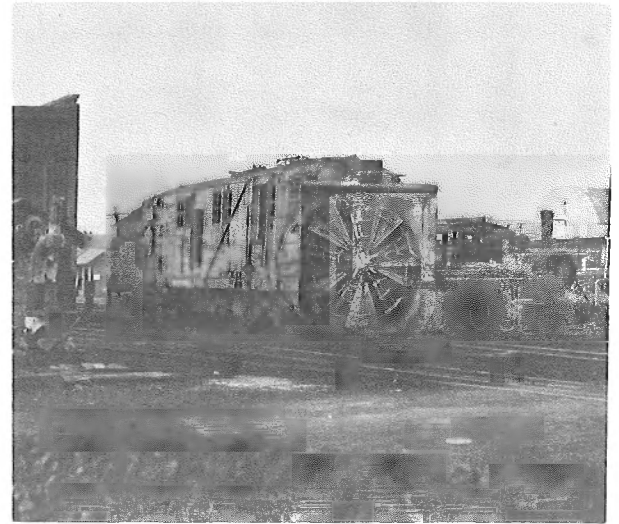
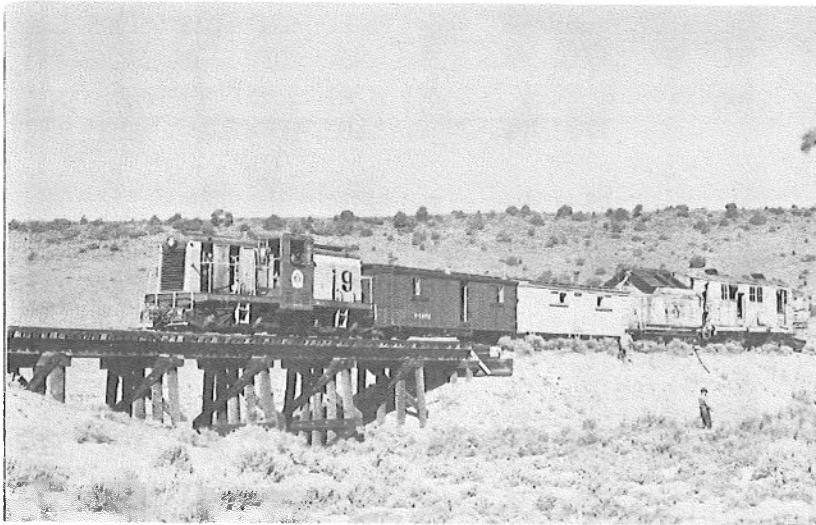
* * * * *

A DUES REMINDER for 1978. \$6.00 per year. Chances on the books COLORADO MIDLAND and PICTORIAL SUPPLEMENT TO DENVER SOUTH PARK & PACIFIC are \$1.00 each. Please note any address changes. Dues cards have not been mailed yet, but will be forthcoming.

* * * * *

TICKETS FOR THE SILENT MOVIE, "THE WHITE DESERT," to be shown at the Paramount Theater on February 23, are still available and can be picked up at the Colorado Railroad Museum. The box number given in the January newsletter for the Intermountain Chapter, NRHS, should have read 5181, NOT 4181. Sorry for any inconvenience it may have caused. The Editor gets 30 whacks with a wet Amtrak handtowel for that one!

* * * * *



A not-too-frequent type of train movement took place on the Cumbres & Toltec Scenic Railway last fall, when Roatry OY was moved from Antonito to Chama. George Lawrence took this photograph of the special train as it paused for a "breather" while climbing out of the San Luis Valley on October 16, 1977, and another view of the rotary the following day in Chama. Rotary OY was to be used for the C&TS Winter Special on February 4 and 5 while Rotary OM was to have been a spectator for a change. At the time of this writing, it is reported that all accommodations in Chama have been taken by visitors, looking forward to a fun-filled weekend.

* * * * *

IT IS WITH DEEP REGRET we report the death of Elsie Ingles, who passed away in Denver on January 20th. The wife of John Ingles and mother of Janis Oatham and of J. David Ingles of "Trains" magazine, Elsie was a friend and great traveling companion with many of our long-time club members, and will be missed by all who knew her.

* * * * *

THE AT&SF LITTLETON RAILROAD STATION is now an art center, under the direction of the Littleton Fine Arts Guild. Having been saved from destruction back in 1966 by the Littleton Area Historical Society, much perseverance and money was required to move and restore the structure. The building is now used for art shows, displays, classes and workshops.

* * * * *

GETTING READY - Work at cutting several feet off the edges of the concrete train sheds over Amtrak's platforms at Denver Union Station was completed in January. The extra clearance was needed to accommodate the new Superliner bi-level cars.

* * * * *

THE RIO GRANDE SKI TRAIN is again operating on both Saturday and Sundays this season.

* * * * *

THE DENVER & RIO GRANDE WESTERN has requested approval of a fare increase on the Silverton train. Adult round trip would become \$12.00, \$7.25 for children. The railroad also desires an increase for the use of private cars of \$25.00 per day.

* * * * *

AMTRAK'S SOUTHWEST LIMITED went on the ground at about 90 miles per hour, near Holly, Colorado, on January 19. According to news reports, the 12-car train apparently derailed at a switch about two miles west of town, and finally stopped a couple hundred yards east of town. Two persons suffered minor injuries and the train continued its trip several hours later, leaving four cars at the scene.

* * * * *

THE OLD C&S SHOPS at 7th Street in Denver are being demolished. The brick structures date back to the turn of the century.

* * * * *

THE UNION PACIFIC is going to construct a \$1.8 million automobile unloading and distribution center on the north side of Denver. The 42-acre facility will consist of a rail car unloading facility and paved parking space for 1,300 autos and 60 auto transport trucks. The facility will handle increasing volumes of domestic and foreign autos coming into the Denver area by rail and will relieve congestion at UP's Denver facility.

* * * * *

SWAP 'N SHOP - Personal ads are accepted from members for items to be listed for sale or trade or wanted. We cannot enter into any correspondence, nor appraise items.

FOR SALE: Rio Grande Southern employee timetable No. 6, 7/8/48. Mint condition. Several copies - make offer for one or all.
TOM SAVIO, Box 3550, Pasadena, California 91103

EVEN TRADE: A super mint copy of No. 3718 of PICTORIAL SUPPLEMENT TO DENVER SOUTH PARK & PACIFIC for RAILS AROUND GOLD HILL. All maps and book cover included.
ED H. ROGERS, P.O. Box 2873, Estes Park, Colorado 80517

FOR TRADE: Special limited edition copy No. 729 of RIO GRANDE . . TO THE PACIFIC, mint condition for equivalent copy of SILVER SAN JUAN.
E. G. LOFTUS, 1455 Gillaspie Drive, Boulder, Colorado 80303

WANTED: Two Howard Fogg Christmas cards by Leanin' Tree: T801 - Sierra Nevada Shay, T804 - C&S Boreas Pass doubleheader; also Golden West Electric Railroad Calendars, 1970-71, 1973-74-75.
CHARLES ALBI, 460 So. Marion St., No. 306, Denver Colorado 80209

FOR SALE & WANTED: W. H. Jackson prints for sale. Extra 18" x 25" prints from Sundance book, duplicates I don't need. \$2.25 each, or \$1.75 in lots of 5 or more. Postpaid in tube. Send LSSAE for list of available prints.

Wanted: NARROW GAUGE NEWS put out by the narrow gauge museum at So. Alamosa, 1949 to 1958; any or all. Also any miscellanea from said museum, as well as the Colorado Railroad Museum, such as catalogues, souvenir folders, auction lists, flyers, out-of-print publications, etc. Reasonable prices paid for items I can use.

GEORGE E. PITCHARD, RFD #3, Weiting Road, New Milford, Conn. 06776.

FOR SALE: M. B. Lee, CRIPPLE CREEK DAYS - this is a worn, library copy. \$3.35. Xerox copies of the MKT Roster of Motive Power, Dec. '43, Jan. '53, \$10.00. Seeking copies of Lipsey, War of the Gauges, Kock, Shay Loco., Potts or Reed's History of Texas Railroads. TTs or keys from Oklahoma or Texas Railroads.
A. VON BLON, 1111 Colcord, Waco, Texas 76707

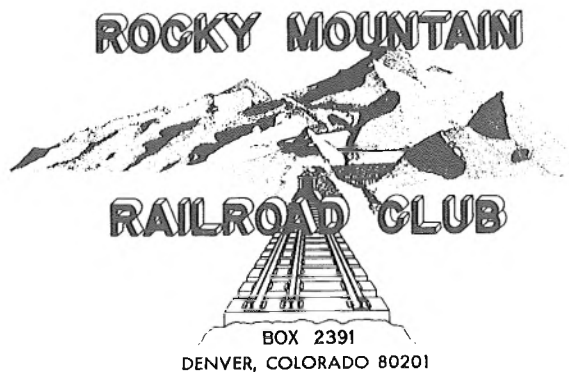
* * * * *

JAMES R. TROWBRIDGE, President

BILL GORDON, Secretary

ED GERLITS, Vice-President

ARDIE SCHOENINGER, Treasurer



FIRST CLASS MAIL
U. S. Postage
PAID
Denver, Colorado
Permit No. 1873

FIRST CLASS MAIL