

STEAM ALL THE WAY!

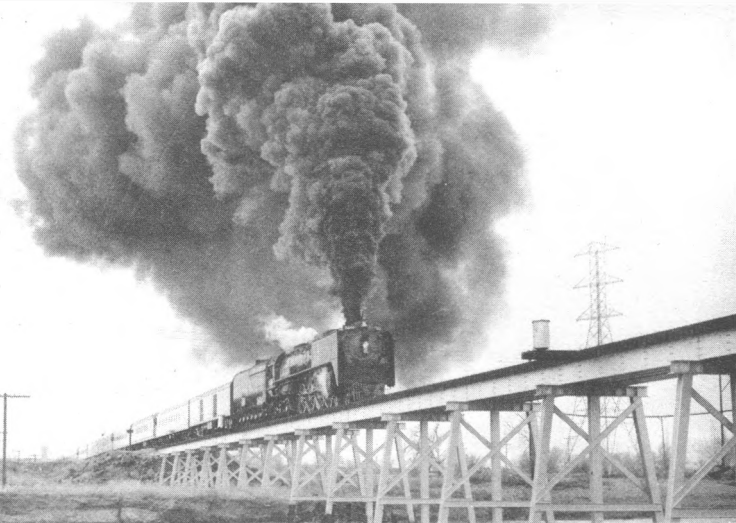
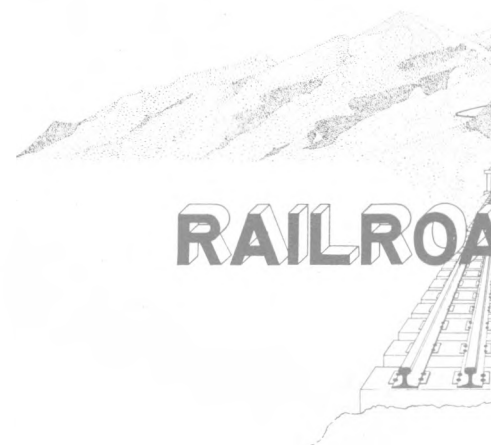
**UNION PACIFIC
STEAM EXCURSION
BEHIND NO. 8444**



FRIDAY MAY 30TH, 1969

ROCKY M

RAILROAD



8444 crossing the new steel bridge over the South Platte

On Friday, May 30, 1969, at 7:30 a. m., Mountain Time, another Rocky Mountain Railroad Club special train will depart from Denver Union Station behind Union Pacific steam locomotive No. 8444, a massive 4-8-4 type, enroute to Laramie, Wyoming. Passengers on U. P. No. 111, City of Denver, should detrain at LaSalle and board our train upon arrival. Our train will not go via Cheyenne. Our train will be routed over the little-used freight-only Dent Branch north of Denver to LaSalle. At LaSalle, we rejoin the main line, make a service and passenger stop at Greeley, and then climb through the rolling hills of northern Colorado. Shortly after entering Wyoming, we begin our climb over Sherman Hill via the Harriman Cutoff and descend through the vast Laramie Valley to Laramie, Wyoming, where another service stop will be made. Our Laramie stop will give you ample time to observe and photograph heavy traffic on the Union Pacific main line.

Some of the Union Pacific's finest equipment will be provided. Our train will consist of a baggage car with safety boards across the side doors (which can be left open),

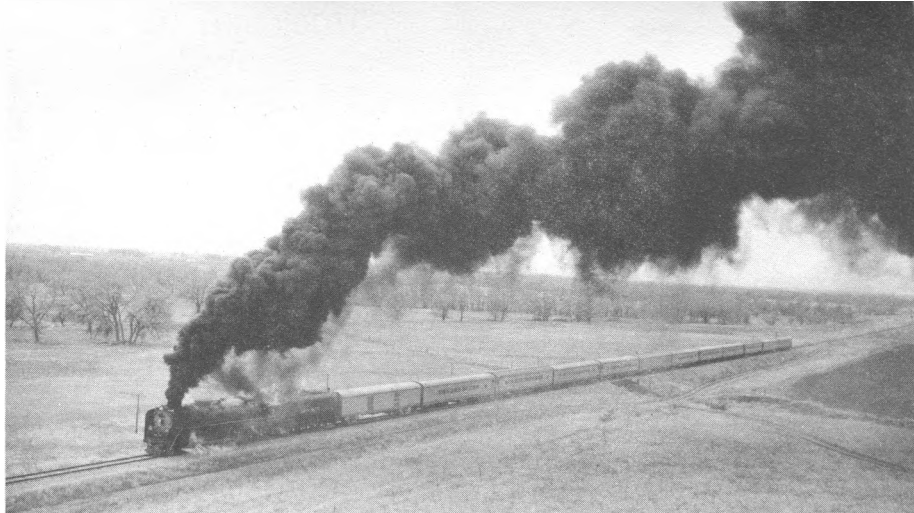
Emerging from Dale Cut on the Harriman Line



Photog
by R. H.

OUNTAIN

D CLUB



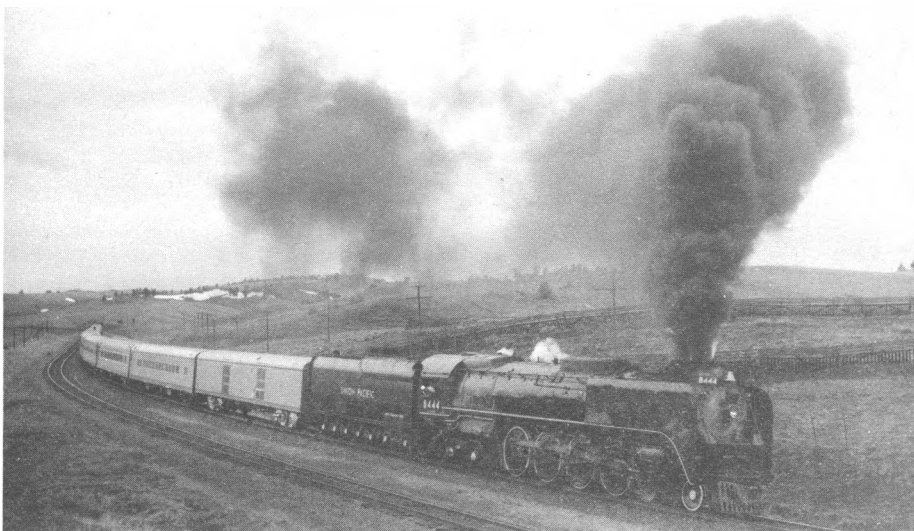
Following the South Platte River near Dent

deluxe coaches, a lunch-counter diner, and a fully-stocked observation-lounge car. A convenient feature of this trip is that buffet-style meals will be served in the lunch-counter diner during the entire trip. All meals are included in the price of your ticket and they will be served on trays that may be carried to your coach seat. You may return for "seconds" as often as you wish.

The train will begin its return trip from Laramie to Denver at 2:00 p. m. Mountain Time. Arrival in Denver is scheduled at 7:00 p. m.

Come along and ride in deluxe passenger equipment behind one of the world's greatest locomotives for over 300 miles of steam railroading. The round-trip fare for this excursion is \$20.00 per adult passenger and \$14.00 for children 6 to 11. See back page for additional ticket details and photo run information.

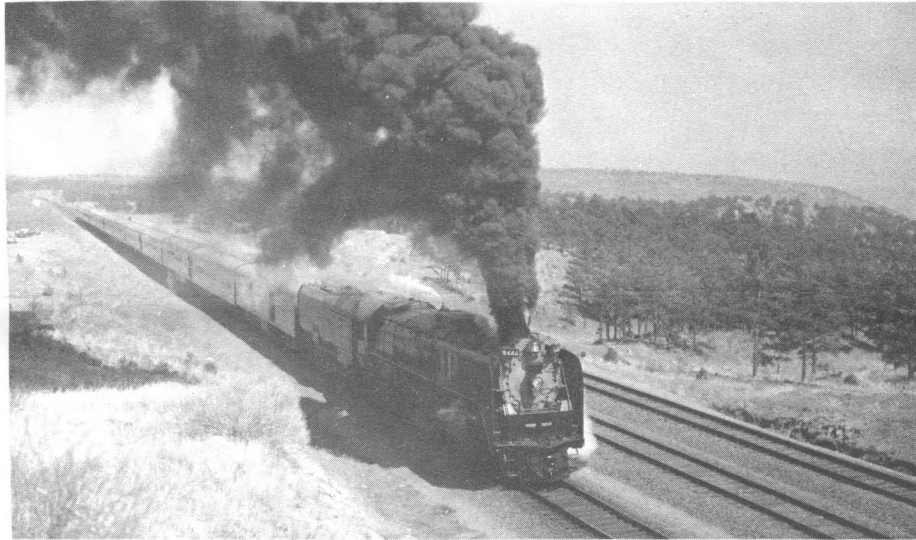
Approaching the 8,013-foot summit of Sherman Hill



phy
indig

PHOTOGRAPHY AND SOUND RECORDING

A number of locations for photo runs have been selected at the most scenic sites available. For your action shots, movies and sound recordings, photo runbys are planned for the Dent Branch, the main line north of Greeley, the Harriman Cutoff, and on the old line over Sherman Hill. Ample opportunity for still photography and shots of main line traffic will be afforded at our stops. Power for recorders is to be available in the baggage car.



TICKET INFORMATION

The round trip fare will be \$20.00 for adults and \$14.00 for children of six and under twelve. In order to minimize last-minute cancellations, no refunds will be made on reservations cancelled after May 15th, 1969. Prior to that date, a \$2.00 service charge will be made on each cancellation to help defray handling costs. The above fare includes all three meals and between meal snacks. Tickets should be purchased from the Rocky Mountain Railroad Club as far in advance of the trip as possible. Reservations will be made upon receipt of the fare in full and will be honored in the order of receipt. Acceptance of the Club's rules of conduct is agreed to when reservations are made. The Club's Directors have decided that, because of annoyance to passengers, no selling will be permitted on the train without the express permission of the Club's President. The Club will have on sale numerous railroad items and souvenirs in its "General Store" on the train. Please fill in the appropriate blanks in the coupon below, if you are ordering your tickets by mail, and send it with your remittance as soon as possible, to The Rocky Mountain Railroad Club, Box 2391, Denver, Colorado 80201

Rocky Mountain Railroad Club
Post Office Box 2391
Denver, Colorado 80201

Check or Money Order for _____ tickets is enclosed

Amount \$ _____

Signed _____

Address _____