

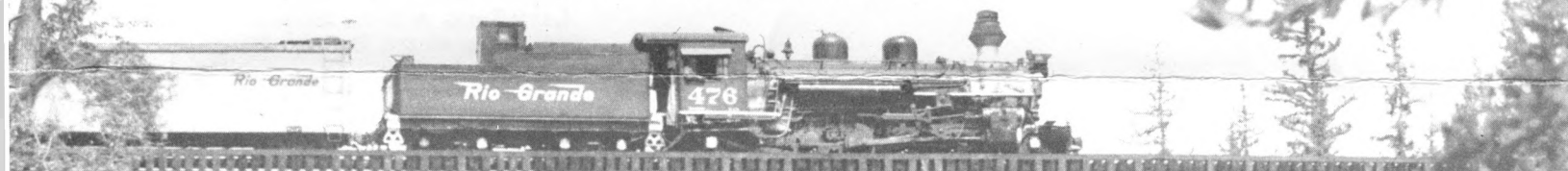
THE  
ROCKY MOUNTAIN



RAILROAD CLUB



INVITES YOU TO  
TAKE A JOURNEY TO



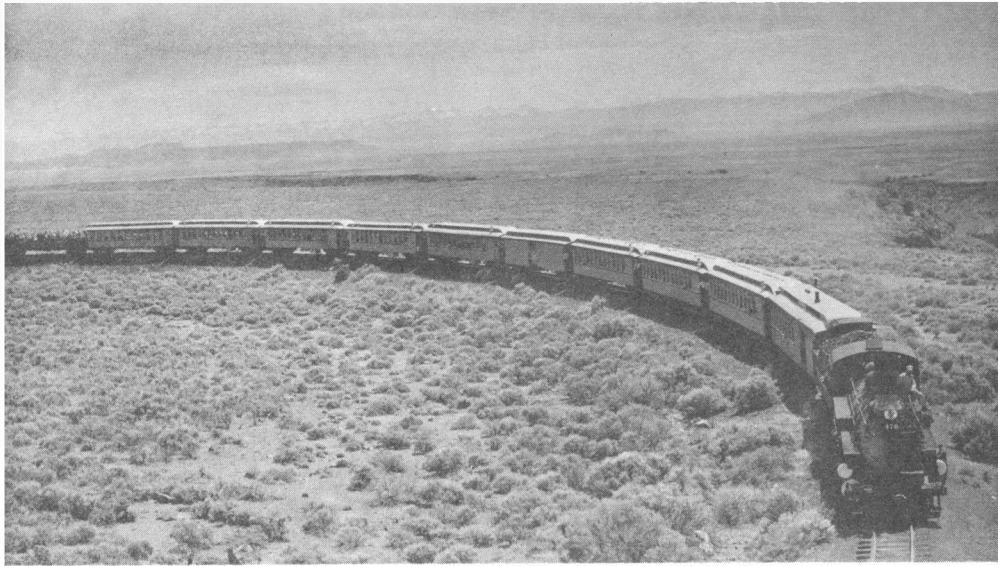
YESTERYEAR

ON ITS ANNUAL

Narrow Gauge Excursion

OVER THE DENVER & RIO GRANDE WESTERN RAILROAD

MAY 29TH, 30TH, 31ST, 1965



## ALMOST 50 BREATH-TAKING NARROW GAUGE S

In its struggle to surmount the lava escarpments forming the transition between the San Luis Valley and the high peaks to the west, a Rocky Mountain Railroad Club eleven-car special, powered by Engine 476, is dwarfed by the vast expanse of the valley, as it approaches Lava Tank, with the snow-covered peaks of the Culebra Range gleaming in the distance.

Once again the Rocky Mountain Railroad Club is ready to provide you with a wonderful opportunity to escape from wearisome travel over humdrum railroads powered only by look-alike diesel locomotives. You are offered three carefree days among the rugged peaks and broad vistas of remote southwestern Colorado--an awe-inspiring region where only narrow gauge steam dares to venture. Shriill whistles of the narrow gauge engines will again echo from wooded hillsides and precipitous canon walls as our special train winds along over 490 sinuous miles of three-foot gauge track through many areas inaccessible by auto. Among the memorable attractions to greet your eyes during the morning hours of the first day are the great San Luis Valley; reverse curve after reverse curve as we head west; the double-reverse curve near Big Horn; the tremendous valley of the Los Pinos River; Mud Tunnel; Phantom Curve with its fantastically eroded rock formations; Toltec Tunnel; awe-inspiring Toltec Gorge; the Garfield Monument; the high steel bridge over Cascade Creek; the steep grades and sharp curves of the final climb to the summit of 10,015-foot Cumbres Pass; famous Windy Point; Lobato trestle over Wolf Creek; and narrow gauge steam engines and facilities at Chama, New Mexico, where a service stop will be made. During the afternoon hours the train will cross the Continental Divide; traverse picturesque Apache and Ute Indian reservations, including serpentine Monero and Navajo Canons; and follow the San Juan River until crossing the Piedra River on a new steel bridge.

After an overnight stay at the narrow-gauge capital of Colorado, Durango, our train will head up



THIS TRAIN  
ON MOUNTAIN DA'

Colorado's deep blue sky, snow-clad peaks, pine-forested lower slopes and red cliffs all blend with the Denver & Rio Grande Western's bright orange cars as our special leaves the narrow confines of the canon to swing through the broad green meadows of Elk Park, a few miles below Silverton.





# 100 MILES OF GREAT COLORADO STEAM RAILROADING

The high steel bridge below Tacoma carries a Rocky Mountain Railroad Club special, with Engine 473 on the head end, across the rushing waters of the Rio de las Animas Perdidas (River of Lost Souls) in the depths of inaccessible Animas Gorge, enroute to Silverton.



the now-famous Silverton Branch and we will view the awesome depths of Animas Gorge, the jagged crests of the Needle Mountains and some of the most spectacular mountain scenery in the United States, as we wend our way to the old mining town of Silverton.

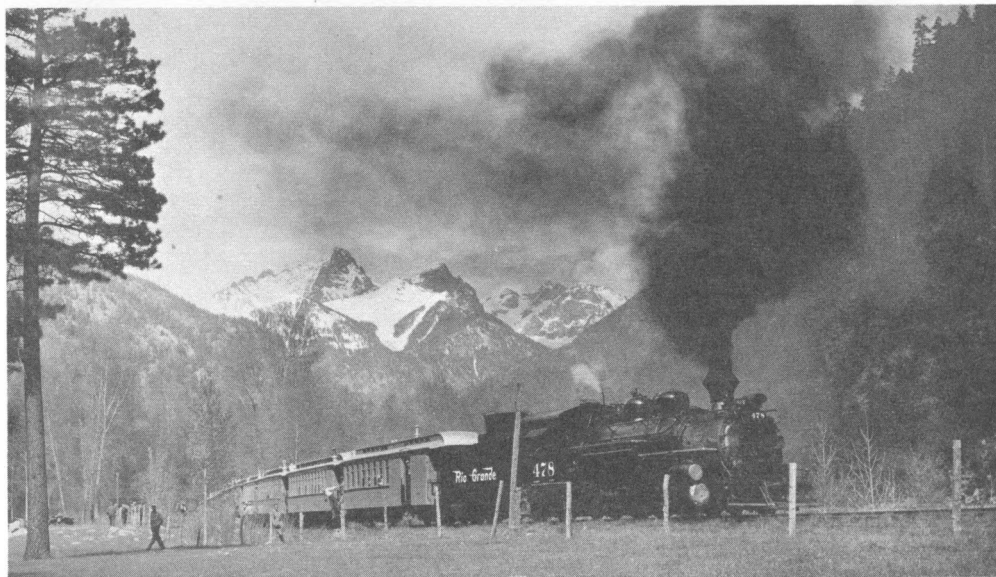
The train, resplendent in its bright orange livery, will consist of a combination car, coaches, snack car with sandwiches and light refreshments available at moderate prices, and a specially-roofed gondola for those who wish to ride outside through the beautiful Colorado and New Mexico scenery. On the head end will be a 2-8-2 locomotive and on the steepest section we will be double-heading.

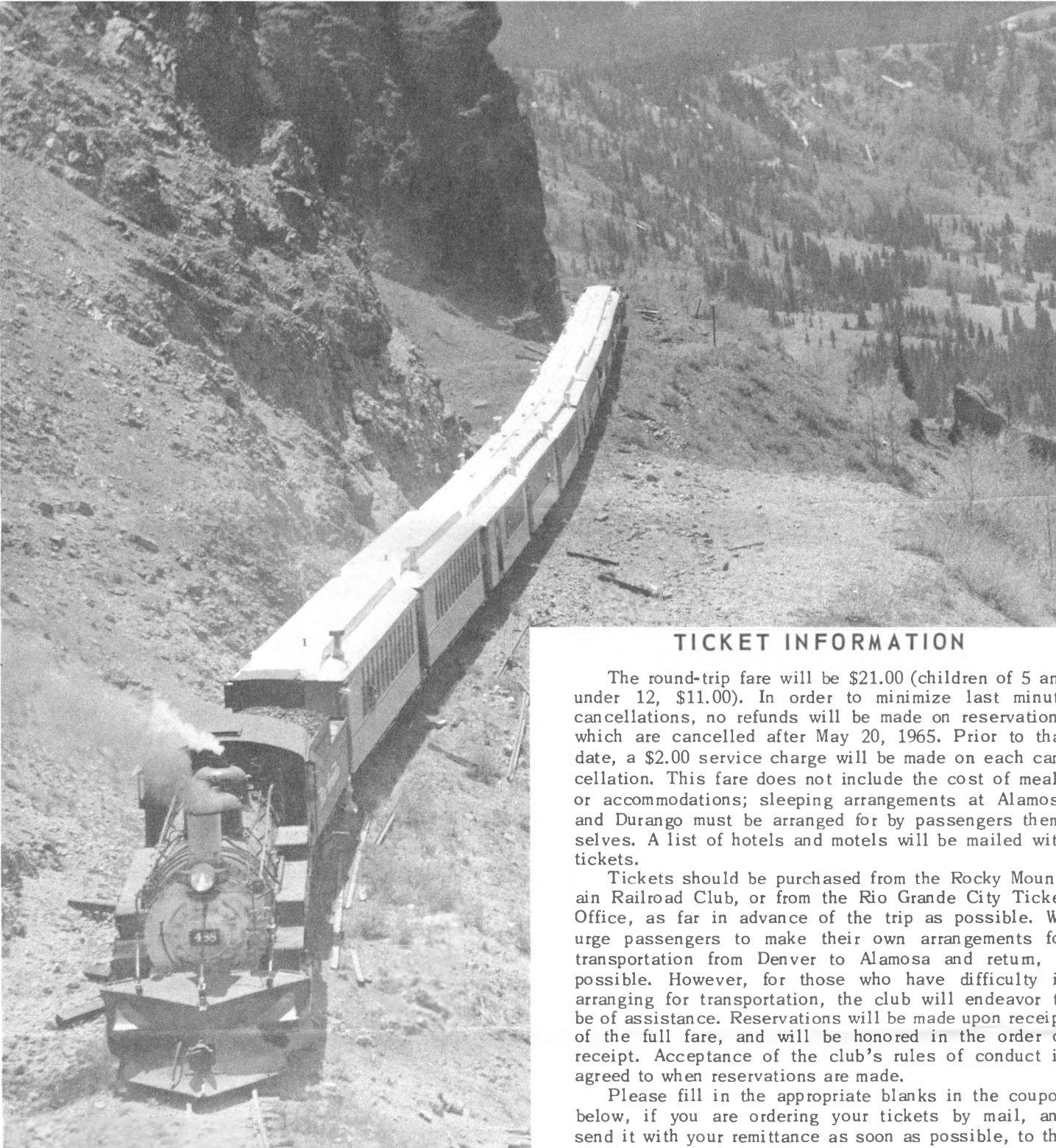
Our special train will leave Alamosa at 7:00 A.M. on Saturday, May 29, and is scheduled for a 6:45 P.M. arrival in Durango. On Sunday, May 30, the train will depart from Durango at 7:00 A.M. for its round trip on the Silverton Branch, arriving at Silverton around 11:30 A.M. Two hours will be allowed for lunch and an inspection of this interesting old Colorado mining town. The return trip down Animas Canon will get us back to Durango around 6:00 P.M. On the third day, our trip will also begin at 7:00 A.M. with our arrival in Alamosa scheduled for 6:45 P.M. A series of photo run-bys have been arranged at some of the more spectacular locations on each day of the trip. There will be other opportunities to photograph the train at water and service stops. Reservations will be honored in the order in which they are received. Our capacity is limited so mail your coupon and check in early.

WILL OPERATE  
DURING LIGHT SAVING TIME



The icy pinnacles of the Needle Mountains jut toward the sky to form an awe-inspiring backdrop for a Rocky Mountain Railroad Club special as it pauses for a photo run-by near Schaaf's Spur, enroute from Silverton to Durango.





### TICKET INFORMATION

The round-trip fare will be \$21.00 (children of 5 and under 12, \$11.00). In order to minimize last minute cancellations, no refunds will be made on reservations which are cancelled after May 20, 1965. Prior to that date, a \$2.00 service charge will be made on each cancellation. This fare does not include the cost of meals or accommodations; sleeping arrangements at Alamosa and Durango must be arranged for by passengers themselves. A list of hotels and motels will be mailed with tickets.

Tickets should be purchased from the Rocky Mountain Railroad Club, or from the Rio Grande City Ticket Office, as far in advance of the trip as possible. We urge passengers to make their own arrangements for transportation from Denver to Alamosa and return, if possible. However, for those who have difficulty in arranging for transportation, the club will endeavor to be of assistance. Reservations will be made upon receipt of the full fare, and will be honored in the order of receipt. Acceptance of the club's rules of conduct is agreed to when reservations are made.

Please fill in the appropriate blanks in the coupon below, if you are ordering your tickets by mail, and send it with your remittance as soon as possible, to the Rocky Mountain Railroad Club.

ROCKY MOUNTAIN RAILROAD CLUB

P. O. Box 2391, Denver 1, Colorado.

Check or money order for \_\_\_\_\_ tickets is enclosed.

Amount \$ \_\_\_\_\_

Check here if you  
desire to carry  
passengers between  
Denver and Alamosa.

Signature \_\_\_\_\_

Address \_\_\_\_\_