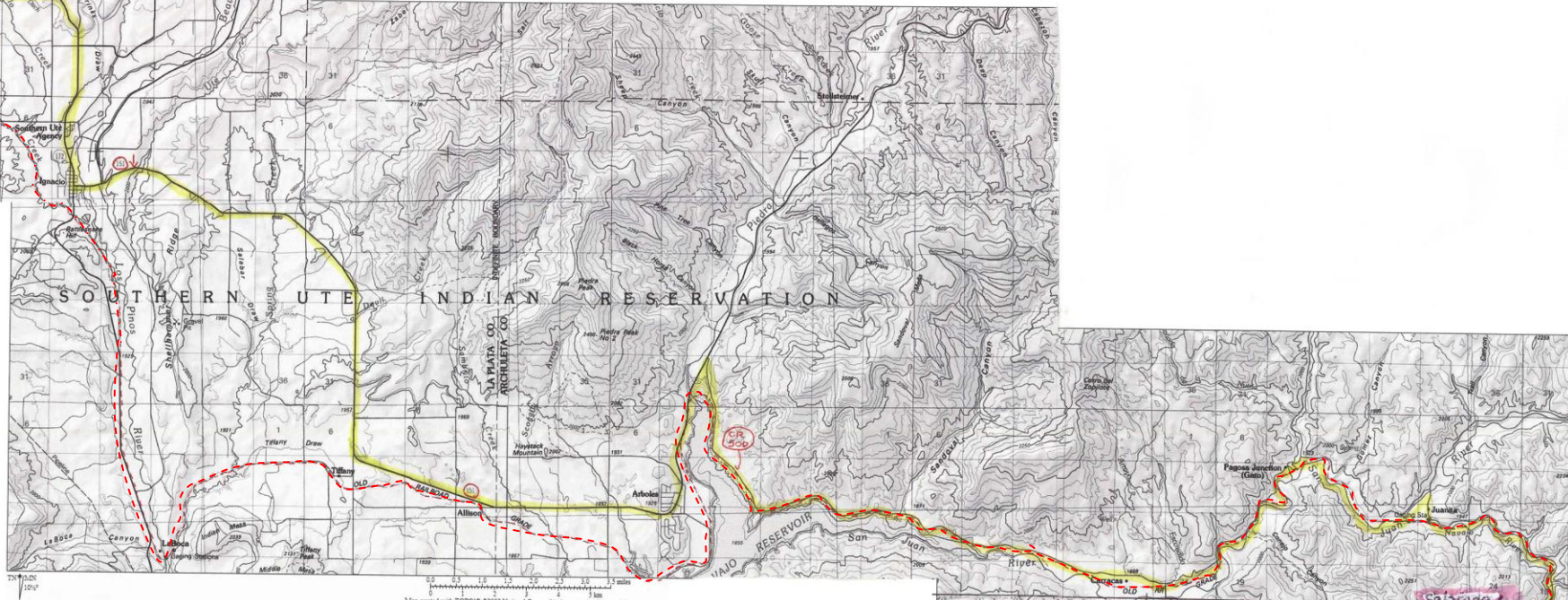
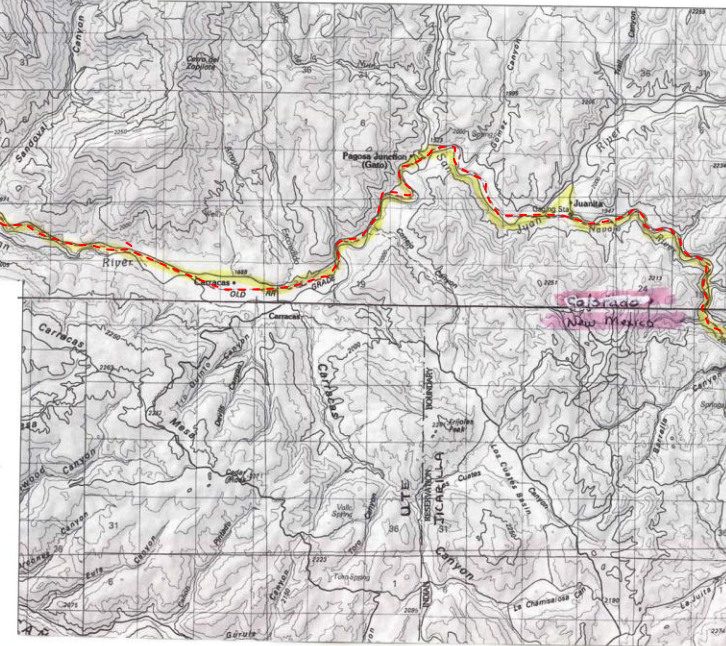


Proposed route of the byway. The roads are **highlighted in yellow** and the **railroad is dotted in red**. Roads on this page, proceeding east from Durango, are US HWY160, Colorado 172, Colorado 151 and Archuleta County 500.



Map created with TOPO!® ©2002 National Geographic (www.nationalgeographic.com/topo)



Proposed route of the byway. The roads are **highlighted in yellow** and the **railroad is dotted in red**. Roads on this page, proceeding east from the state line, are Jicarilla 9, New Mexico 64 and US HWY 84. The maps on these two pages are not quite at the same scale.

